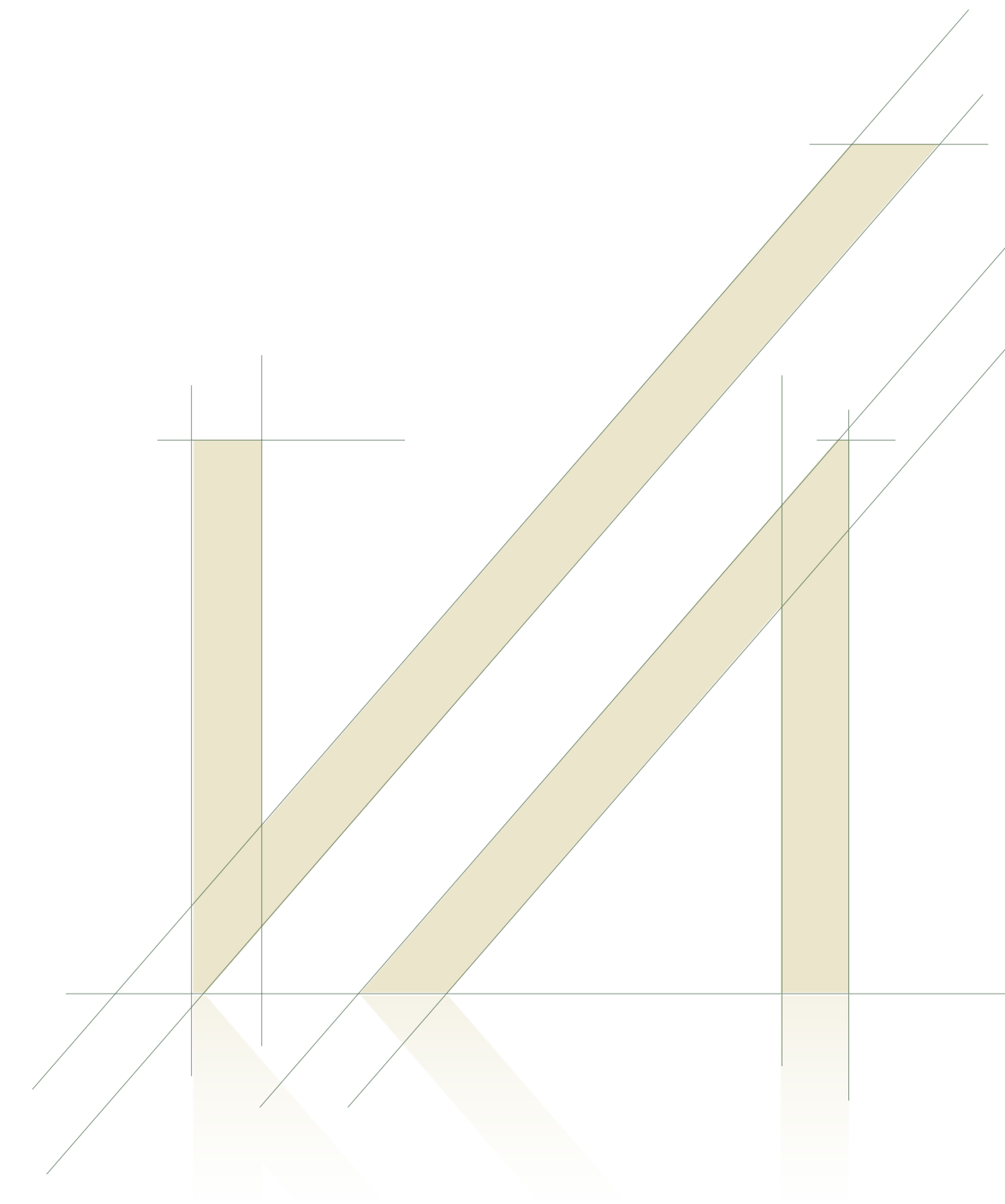




VARIO



Great nations and thriving communities are built on the foundation of shared dreams, unwavering dedication, and the belief that together, we can transform visions into reality.





WE DIFFER TO UNIQUELY INNOVATE





VARIO ENGINEERING CONSULTING

" Your Trusted Partner In Engineering Excellence."

Tired Of Repetitive Designs And Costly Mistakes?

We're a Fresh Force in Engineering Consulting

At Vario, we understand the frustrations that plague the construction industry. Cookie-cutter designs are stifling creativity, and mistakes in engineering plans consistently lead to costly delays and safety hazards.

As a leading engineering consultancy firm, we're on a mission to redefine industry standards by delivering innovative, efficient, and sustainable solutions.



DISTINCTIVE DESIGN AND PRECISION ENGINEERING

Vario's Unique Approach

We see the potential of our partnerships as promising opportunities to create, innovate, and build something special.

Because we believe that every new project deserves a unique touch, we're passionate about pushing the boundaries of creativity and functionality in ways that truly set your structures apart.



Here's How We're Reimagining the Built Environment

BREAK THE MOLD

We challenge the status quo by providing distinctive and creative architectural designs.

As a team of expert architects and designers, we make imagination tangible, whether it's a sleek, modern building or a historic restoration project.

CORRECT THE COURSE

Trust our team to review and analyze your existing engineering designs to identify and rectify errors.

Thanks to our deep understanding of construction standards and regulations, we're here to ensure your project is built to last.

ACCELERATE PROGRESS

Streamlining the design and construction process is second nature to us.

Through innovative, efficient, and timely solutions, we're able to meet the tightest of deadlines without having to compromise on quality.

OPTIMIZE COSTS

Through comprehensive economic studies, we'll identify any and all potential cost-saving opportunities and maximize return on investment.

Rest assured, you'll receive all you need to make informed decisions about your project budget.



OUR VISION

The company “Vario” Engineering Consulting operates according to the highest global standards, committed to strategic growth and development.

Through our strong partnerships with various local and international companies, we provide the latest technologies and scientific systems to the local market.

Our close collaboration with our partners enhances our capabilities to deliver innovative solutions that meet our clients' needs, with a focus on the scientific and social aspects in the engineering sector that impact people and the environment.

We also strive to provide effective solutions to address environmental issues, while adhering to the highest standards of safety and sustainability.



Vario's Core Services

DESIGN

Our design services encompass a wide range of disciplines, including architectural, structural, MEP engineering, and interior design.

From concept to completion, we're committed to creating functional, beautiful, and sustainable structures and interiors that align with your vision, schedule, and budget.

SUPERVISION

We'll keep a watchful eye on every stage of your project, ensuring adherence to design specifications, building codes, and safety standards.

You can breathe easy knowing that our experienced supervisors will be on-site to address any issues and maintain quality control.

ECONOMIC STUDIES

We'll provide valuable insights into project feasibility, cost-benefit analysis, and risk assessment.

By equipping you with a detailed understanding of any financial implications, we make sure you can make confident, strategic choices that maximize your return on investment.

REAL ESTATE DEVELOPMENT

From land acquisition to property management, we cover the entire spectrum.

Our team specializes in identifying lucrative investment opportunities, securing necessary approvals, and overseeing construction and development activities.

As Vario continues to expand and build ourselves, our goal is to become a global leader in the construction industry. One that provides exceptional engineering consulting services that drive sustainable growth and development.



“A skilled building consultant is the bridge between vision and reality, ensuring your property dreams are grounded in practical solutions.”



ASPIRATIONS

To be the leading company in providing advanced construction and design solutions, innovatively transforming ideas into tangible realities that contribute to improving the quality of life and infrastructure in the Kingdom of Saudi Arabia and beyond.

OBJECTIVE

We aim to provide exceptional and comprehensive services in construction and design, focusing on quality, innovation, and the latest technologies to ensure customer satisfaction. We are committed to developing sustainable solutions that meet current needs and future aspirations.

QUALITY

We are committed to delivering the highest quality standards in all our projects.

TRANSPARENCY

We engage with our clients and partners with the utmost honesty and clarity.

INNOVATION

We believe in our ability to innovate and think outside the box to provide exceptional solutions.

SUSTAINABILITY

We are dedicated to practices that protect the environment and support sustainable development.

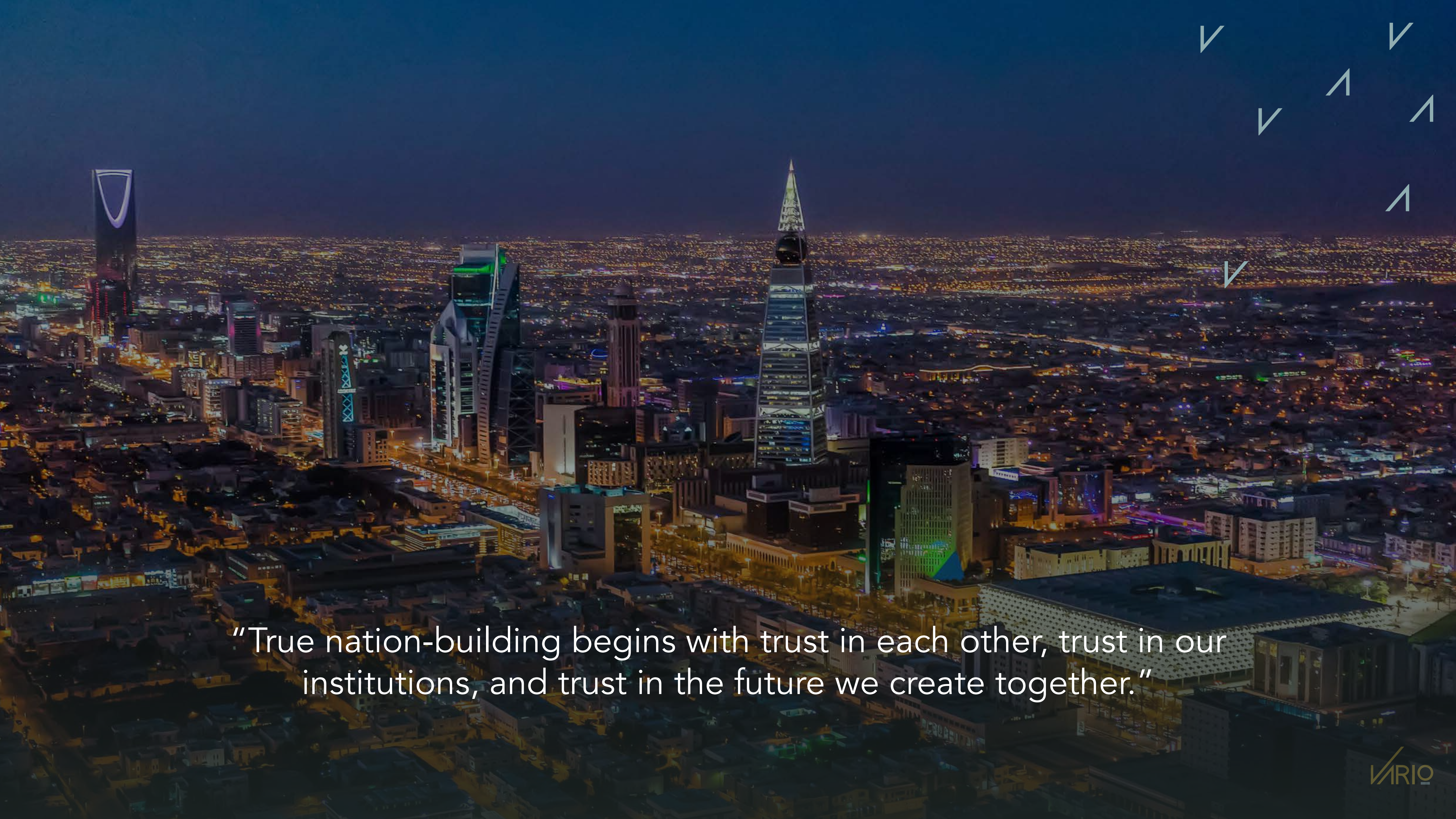


OUR SERVICES

We offer a comprehensive range of services that meet our clients' needs in the fields of construction and building design. We are distinguished by providing innovative and holistic solutions that include planning, architectural design, and supervision of execution, with a strong focus on quality, deadlines, and attention to the smallest details.

We work side by side with our clients to turn their visions into reality, using the latest technologies and best practices in the industry to ensure results that exceed expectations.

- Engineering Consultancy
- Architectural Design
- Structural Design
- Electromechanical Design
- 3D Design (Interior - Exterior)
- Building Permit Issuance
- Project Management
- Engineering Supervision
- Surveying
- Urban Planning
- Road Design
- Traffic Studies
- Hydrological Studies
- Economic Studies
- (Feasibility Studies for Projects)

An aerial night view of a city skyline, featuring prominent skyscrapers like the Burj Khalifa and the Burj Dubai. The city is illuminated with various lights, and the sky is dark. In the top right corner, there are several white checkmark and upward arrow symbols. A quote is overlaid in the lower center of the image.

“True nation-building begins with trust in each other, trust in our institutions, and trust in the future we create together.”



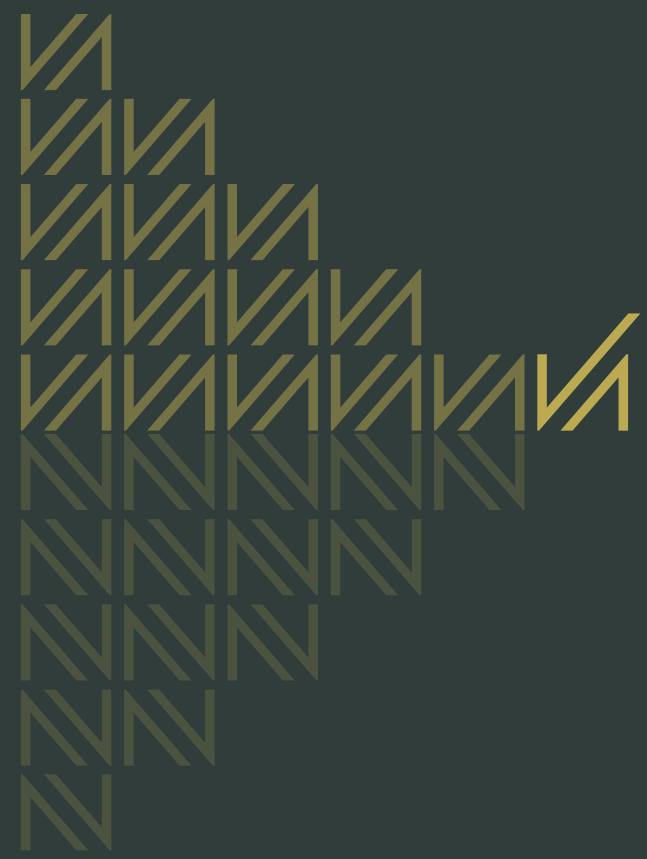
TARGET MARKET

Provide a detailed description of the services your company offers, such as:

- First-time homebuyers
- Real estate investors
- Corporate clients
- Luxury property buyers
- Commercial clients
- Property developers

"A strong nation is built on the foundations of unity,
courage, and the dreams of its people."





PROJECTS PORTFOLIO

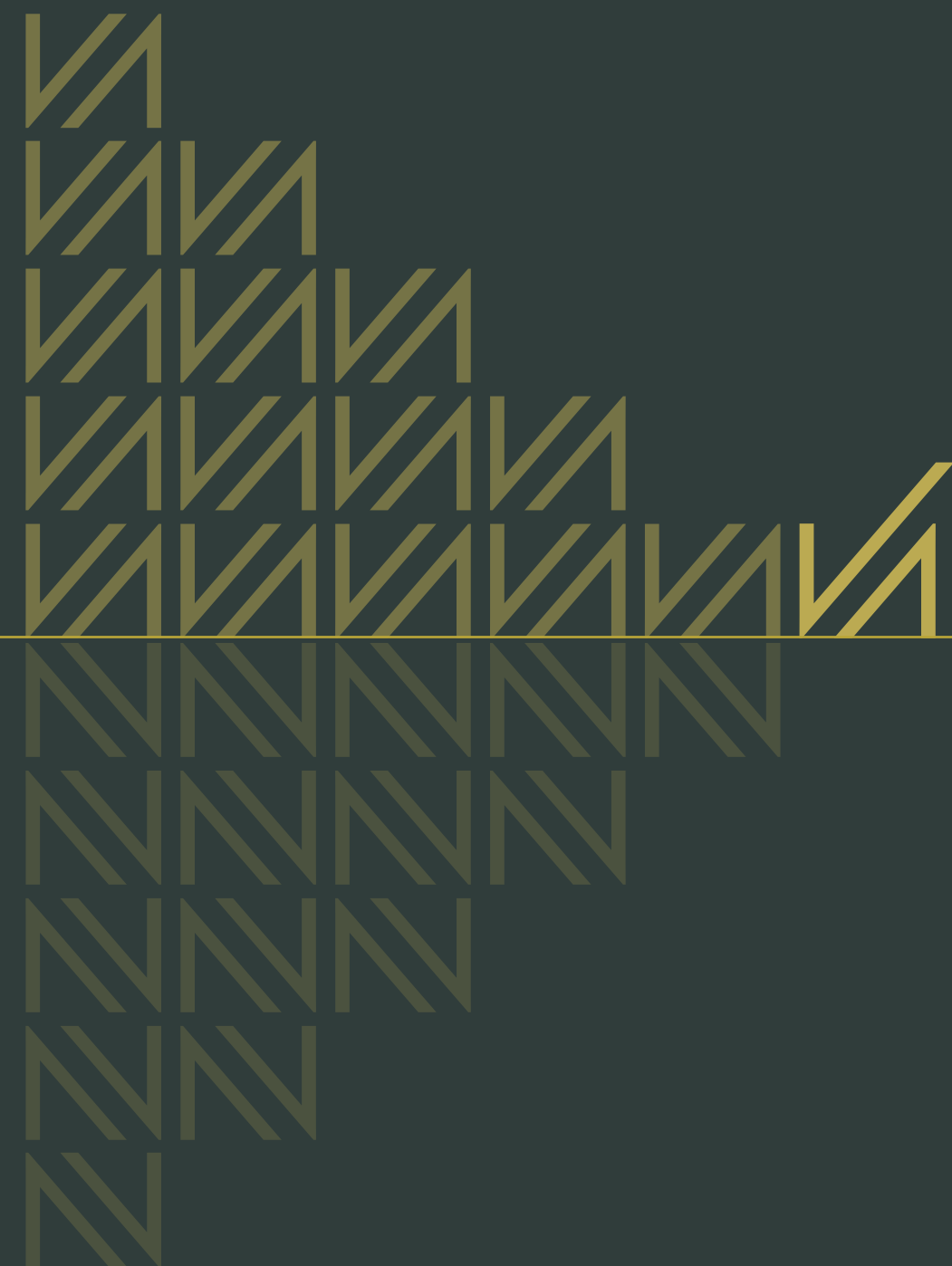


01

PROJECT PROFILE

BUILDINGS
RESIDENTIAL
COMMERCIAL
DIVERSE PROJECT
INTERIOR DESIGN
STRUCTURAL DESIGN





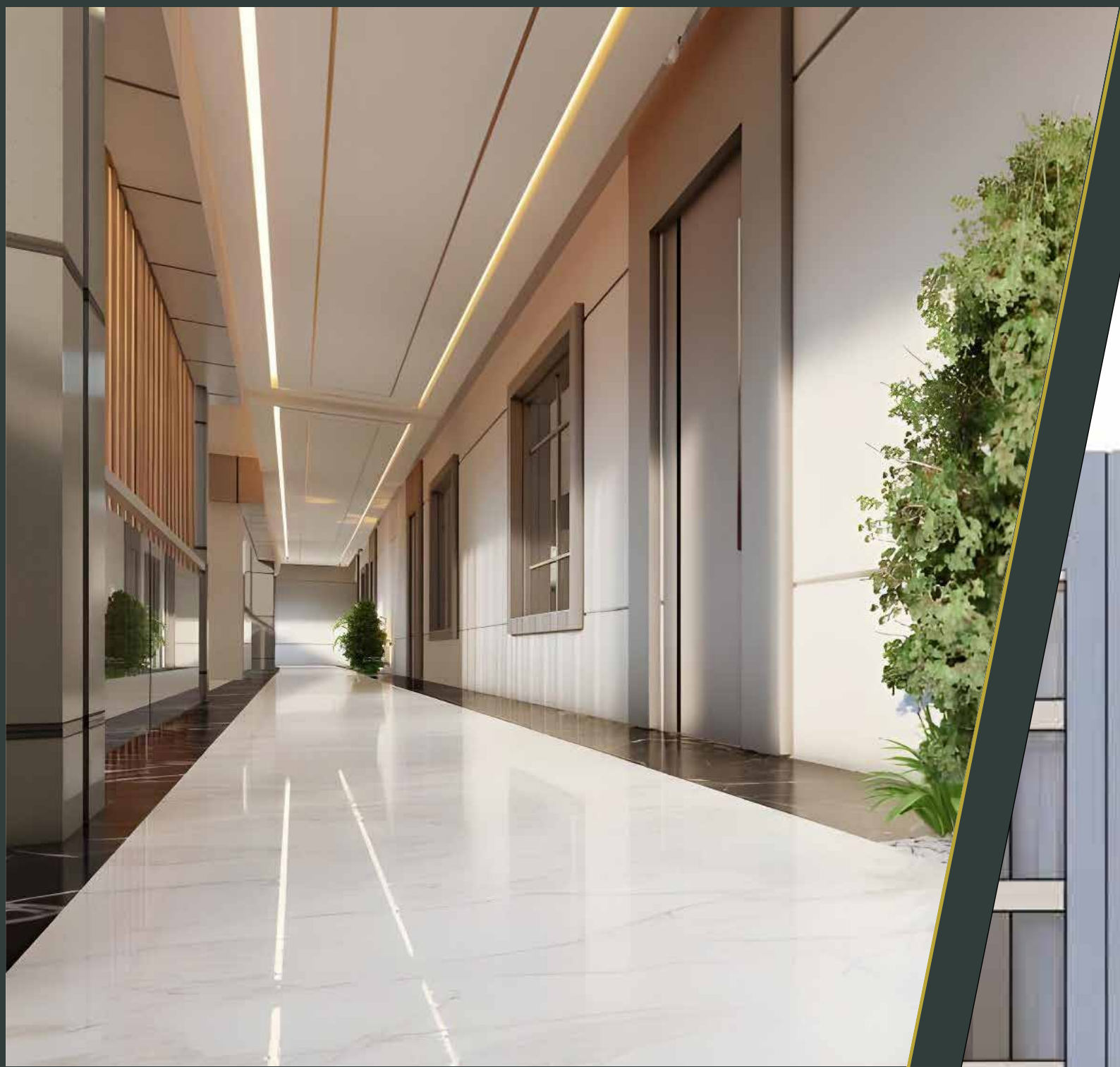
RESIDENTIAL BUILDING



RESIDENTIAL BUILDING
Ownership Apartments
Al-Mursalat District

- Land Area: 3,412 square meters



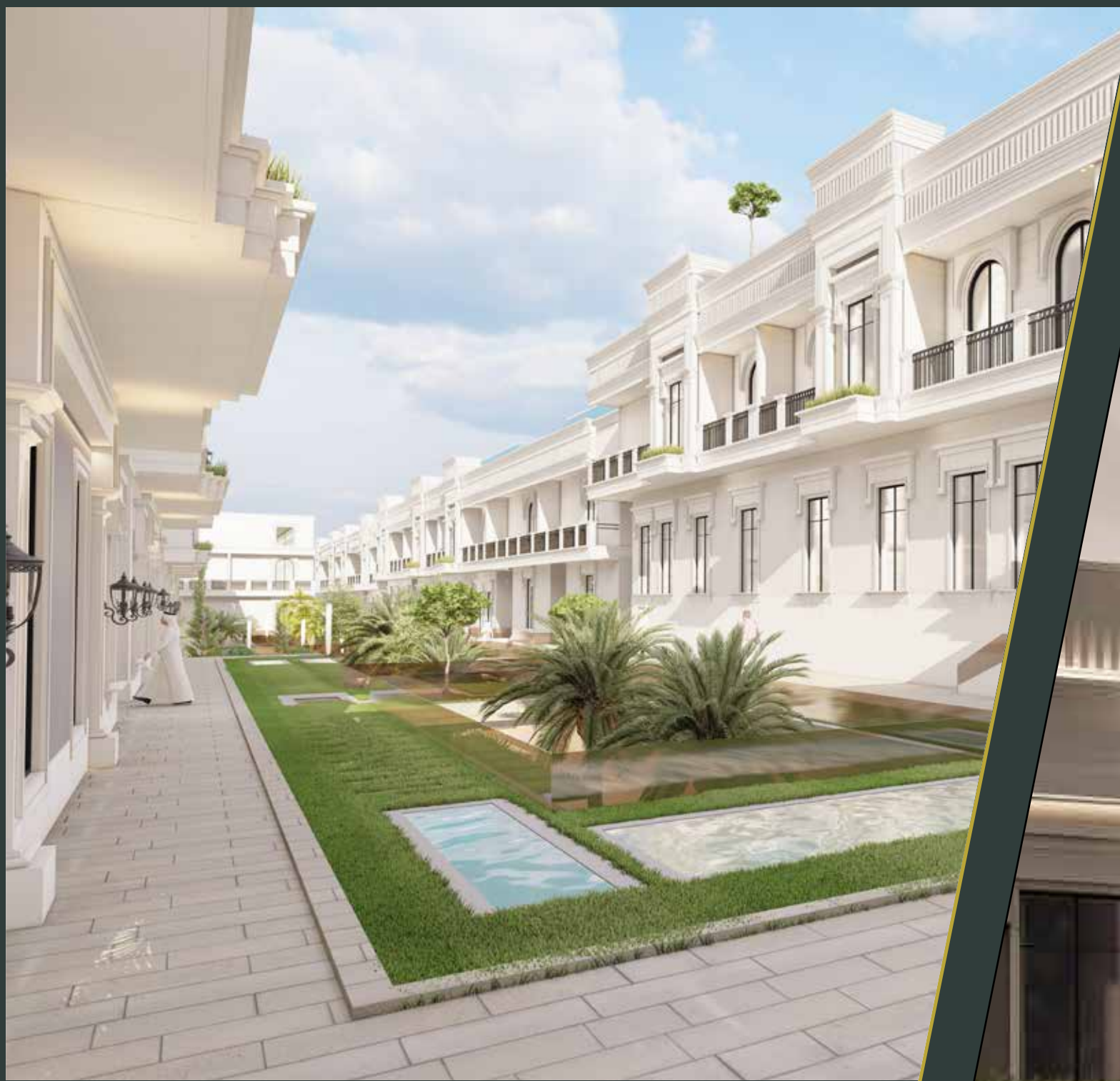


RESIDENTIAL BUILDING

Ownership Apartments
Al-Khobar District

- Land Area: 2,150 square meters
- Number of Residential Units: 28 units
- Ground Floor: Parking + Four Floors





RESIDENTIAL BUILDING

Ownership Apartments

Al-Narjis District

- Land Area: 16,028 square meters
- Number of Residential Units: 174 units





RESIDENTIAL BUILDING

Ownership Apartments

Al-Waha District

- Land Area: 7,180 square meters
- Number of Residential Units: 100 units





RESIDENTIAL BUILDING

Ownership Apartments
Al-Murjan District

- Land Area: 4,311.60 square meters
- Number of Residential Units: 60 units





RESIDENTIAL BUILDING

Ownership Apartments

Rakhah Residence

- Land Area: 1,013.40 square meters
- Number of Residential Units: 14 units



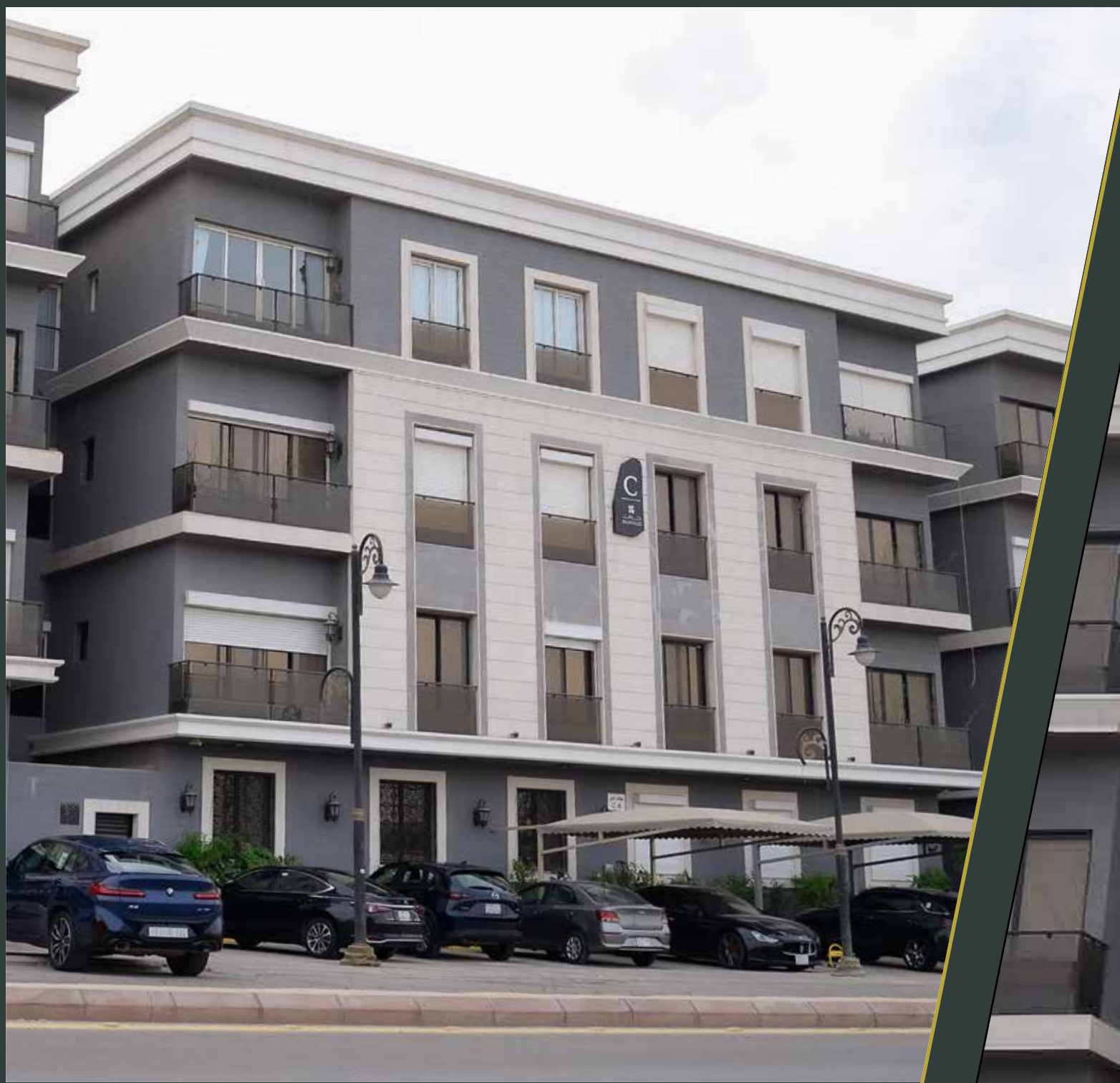


RESIDENTIAL BUILDING

Ownership Apartments
Al-Narjis District

- Land Area: 40,000 square meters
- The project includes residential, hotel, administrative, and commercial units.





RESIDENTIAL BUILDING

Ownership Apartments
Al-Rahmaniya District

- Land Area: 3,500 square meters
- Number of Residential Units: 56 units





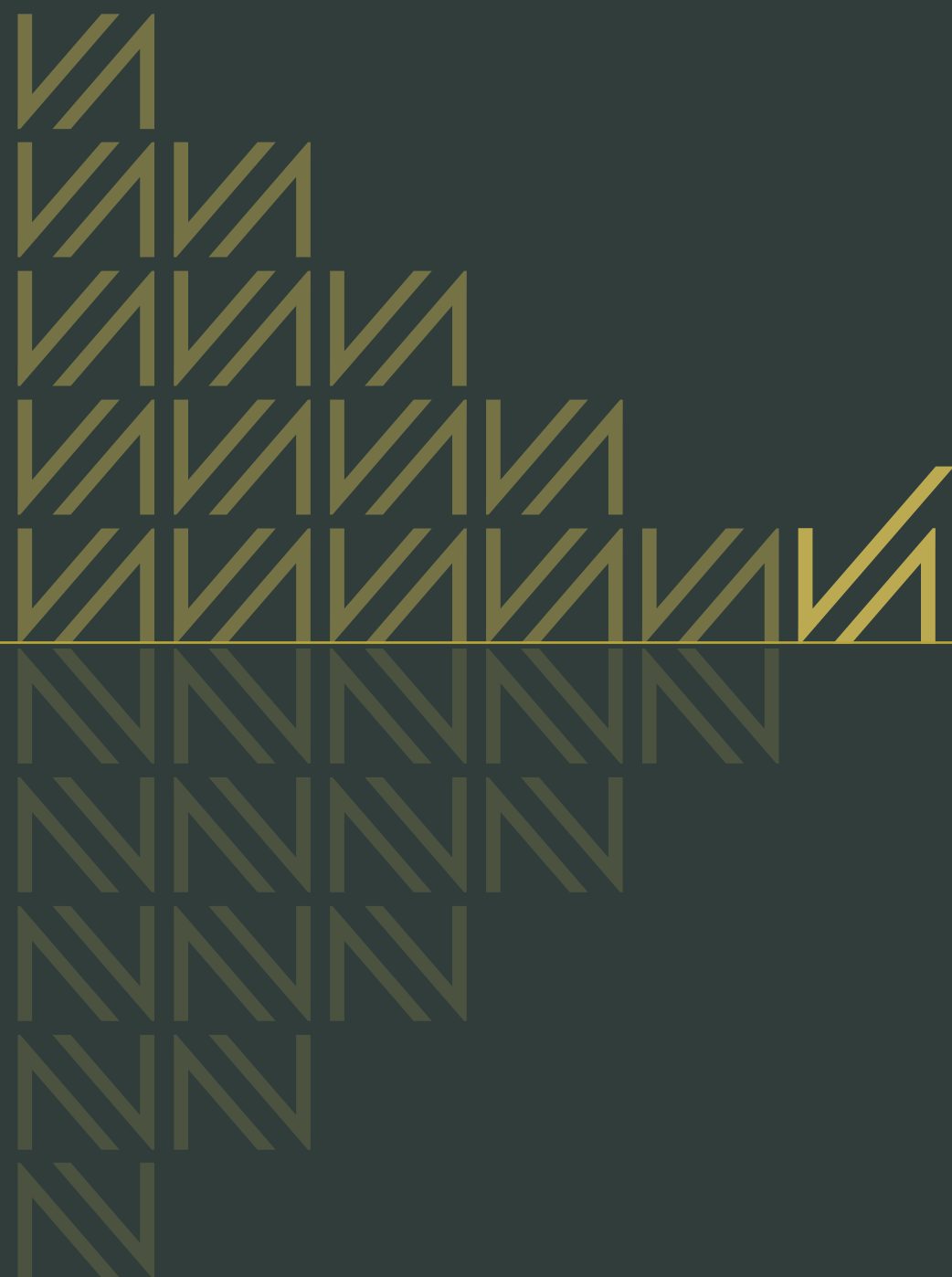
“The true strength of a nation lies in its ability to embrace diversity and weave it into a tapestry of shared purpose.”

02

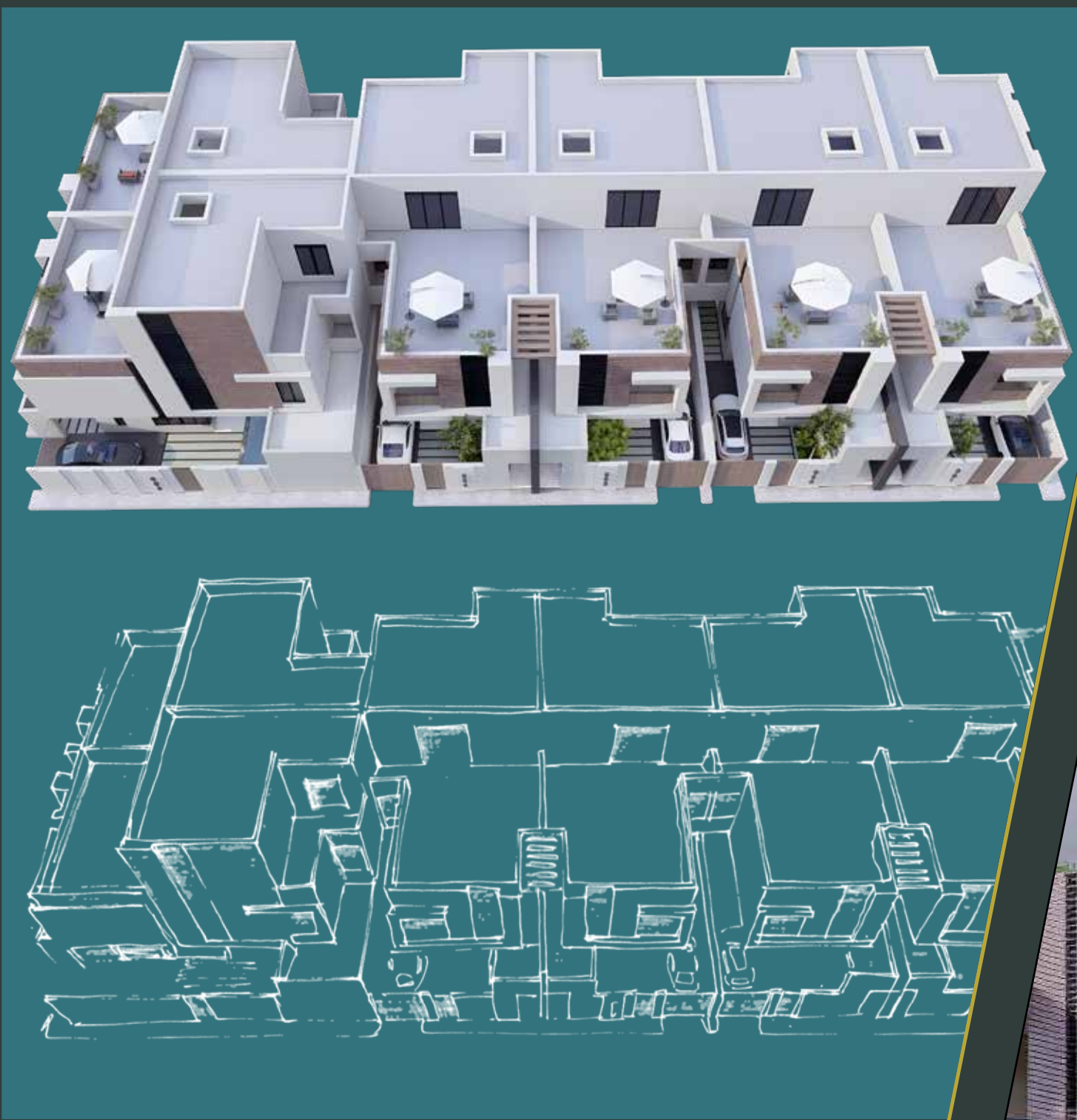
PROJECT PROFILE

BUILDINGS
RESIDENTIAL
COMMERCIAL
DIVERSE PROJECT
INTERIOR DESIGN
STRUCTURAL DESIGN





RESIDENTIAL VILLAS



RESIDENTIAL VILLAS Al-Narjis District

- Land Area: 1,500 square meters





RESIDENTIAL VILLAS Al-Yasmeen District

- Land Area: 2,270 square meters
- Number of Residential Units: 24 units





RESIDENTIAL VILLAS Al-Yasmeen District

- Land Area: 2,270 square meters
- Number of Residential Units: 24 units

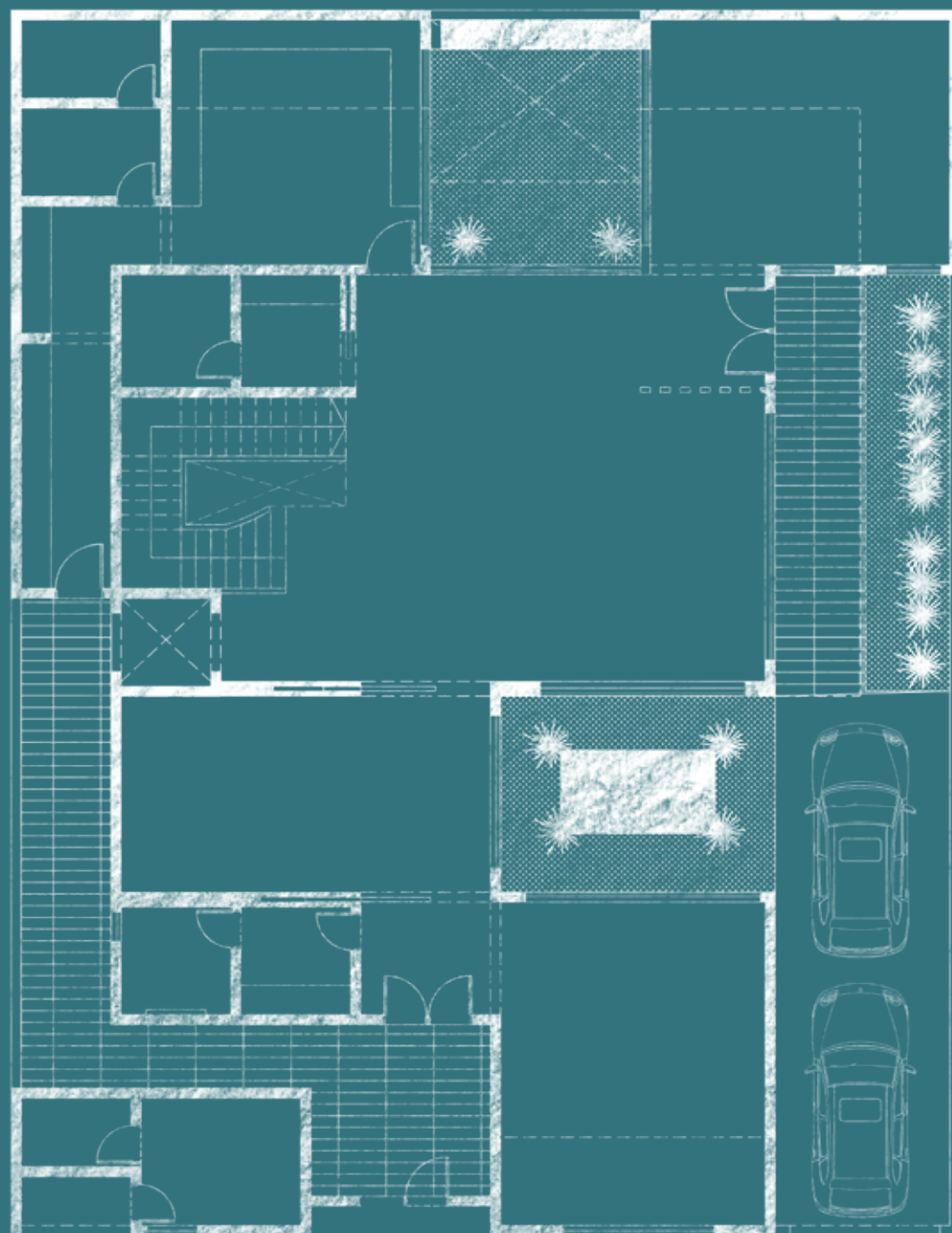




RESIDENTIAL VILLAS Al-Rayan District

- Land Area: 1,500 square meters





RESIDENTIAL VILLA
Wadi Hanifa Code
Al-Mahdiyah District

- Land Area: 475 square meters





RESIDENTIAL VILLA
Wadi Hanifa Code
Zhahrat Al-Oudah District

- Land Area: 660 square meters

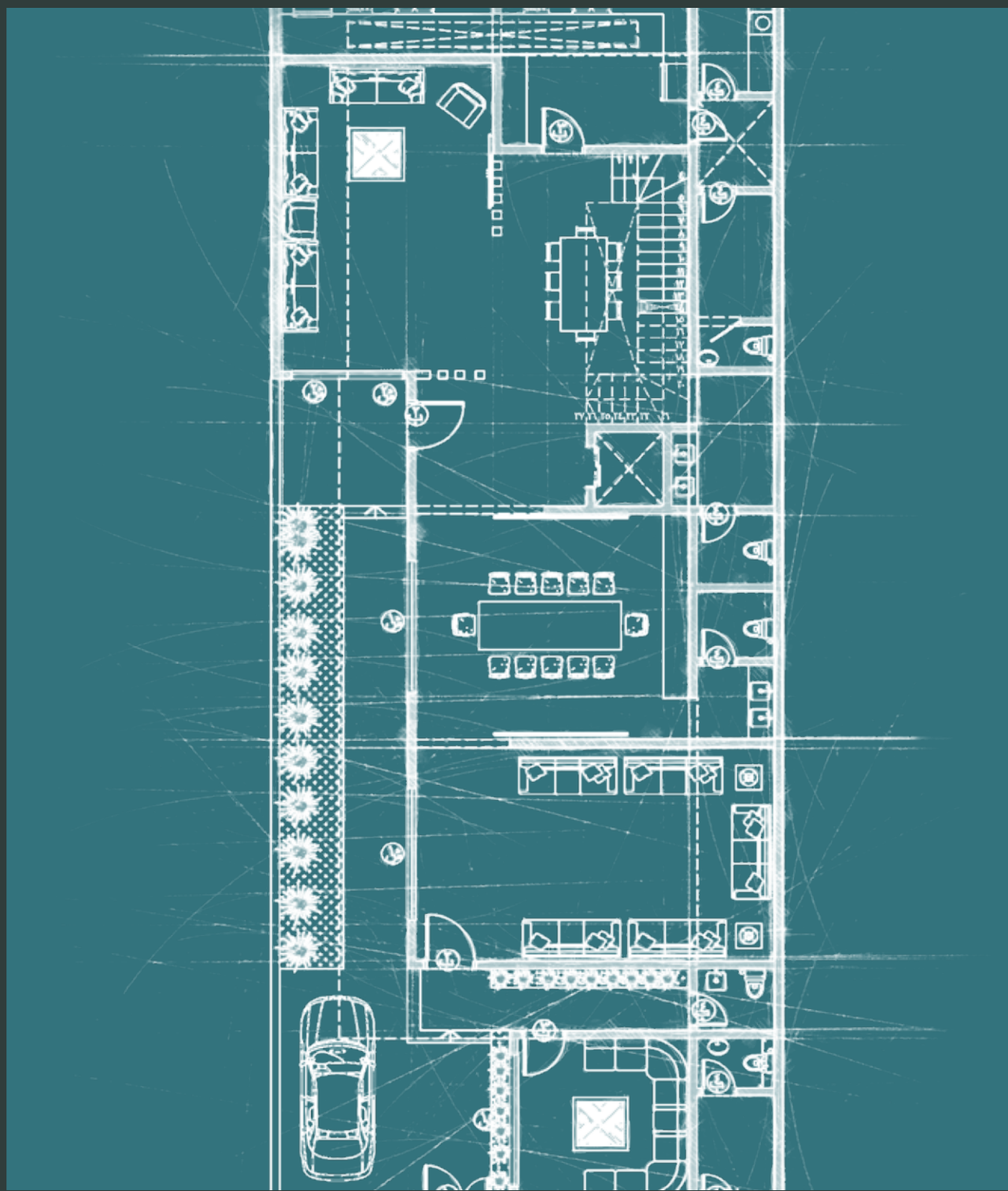




DUPLEX VILLAS Al-Nafl District

- Land Area: 2,160 square meter





RESIDENTIAL VILLA Al-Narjis District

- Land Area: 390 square meters



RESIDENTIAL VILLA
Jeddah

- Land Area: 362 square meters





RESIDENTIAL VILLA Al-Malqa District

- Land Area: 405 square meter





DUPLEX VILLAS Al-Nafl District

- Land Area: 2,160 square meter





RESIDENTIAL VILLA Al-Narjis District

- Land Area: 900 square meter





RESIDENTIAL VILLA Zulfi

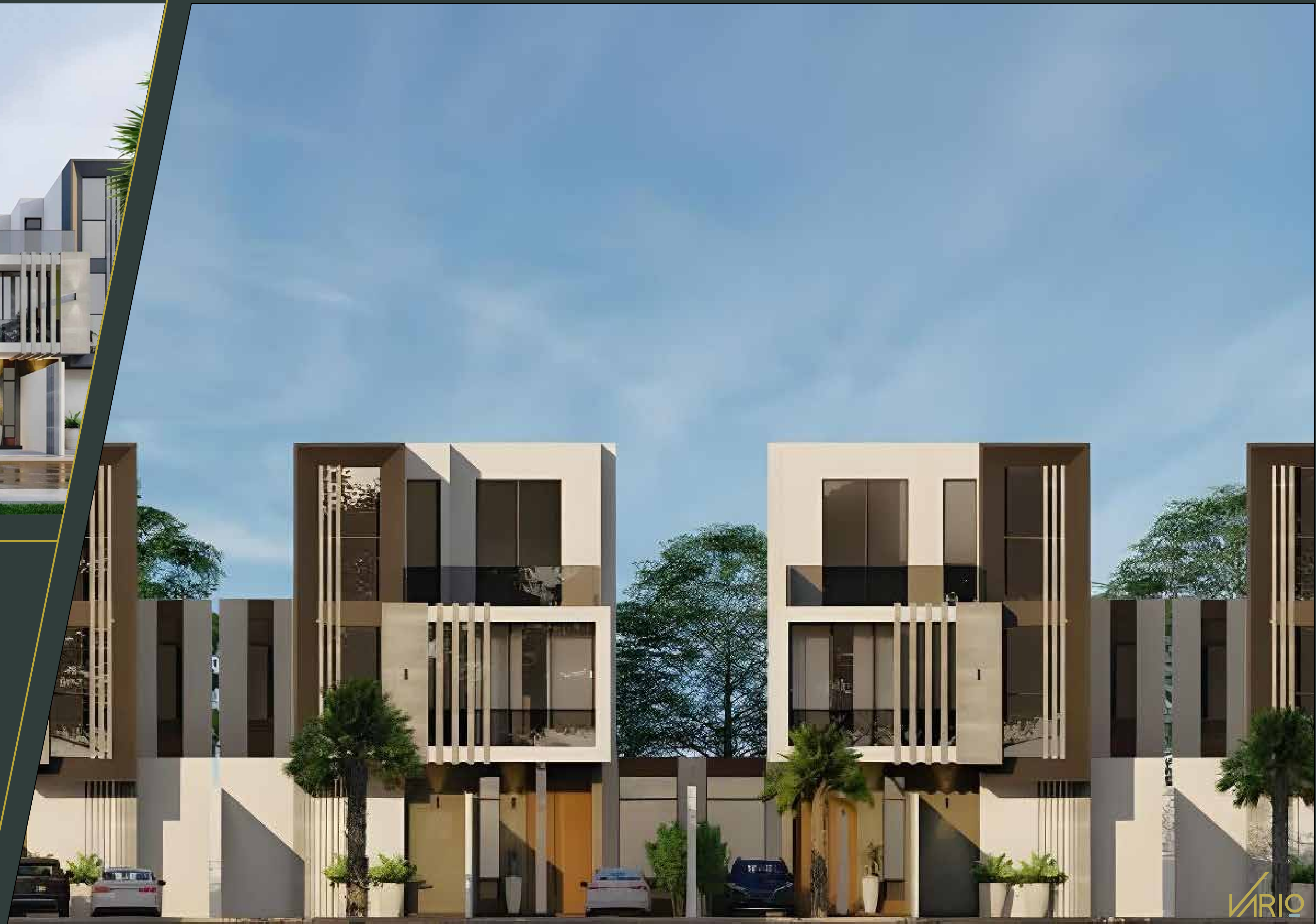
- Land Area: 800 square meter





RESIDENTIAL VILLA Al-Qirawan District

- Land Area: 1,826 square meter





RESIDENTIAL VILLA
Al-Malqa District

- Land Area: 450 square meter

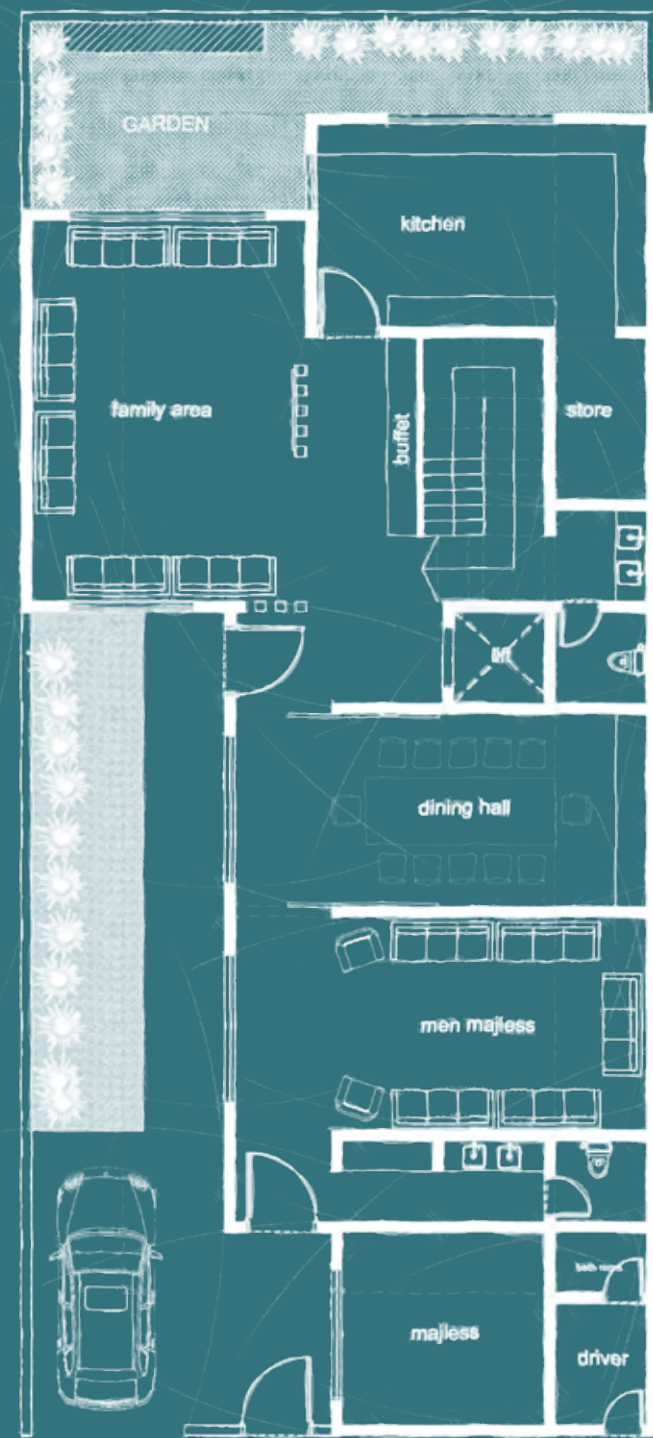




PRIVATE PALACE
King Salman District

- Land Area: 1,750 square meter





RESIDENTIAL VILLA Al-Qirawan District

- Land Area: 520 square meters

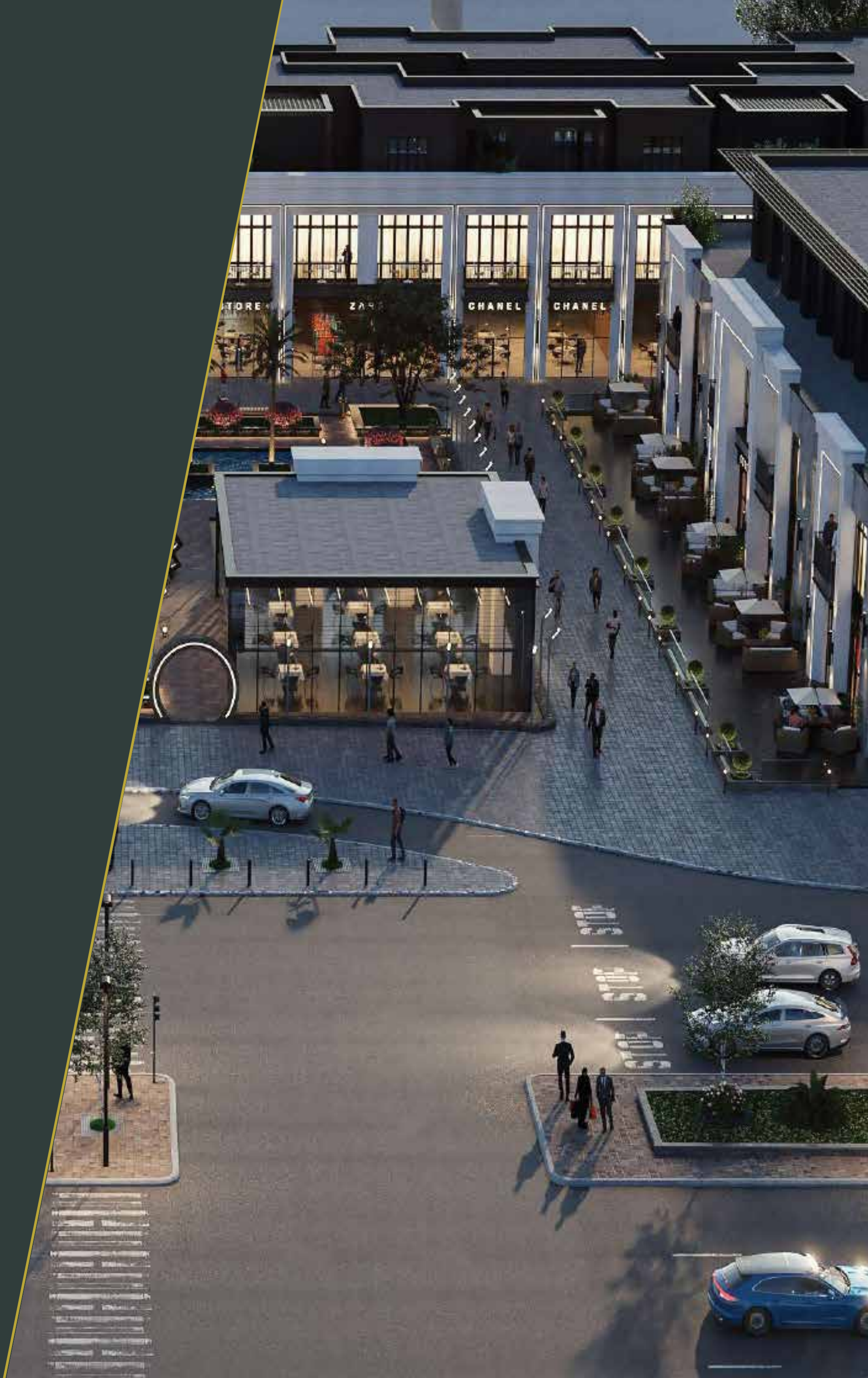


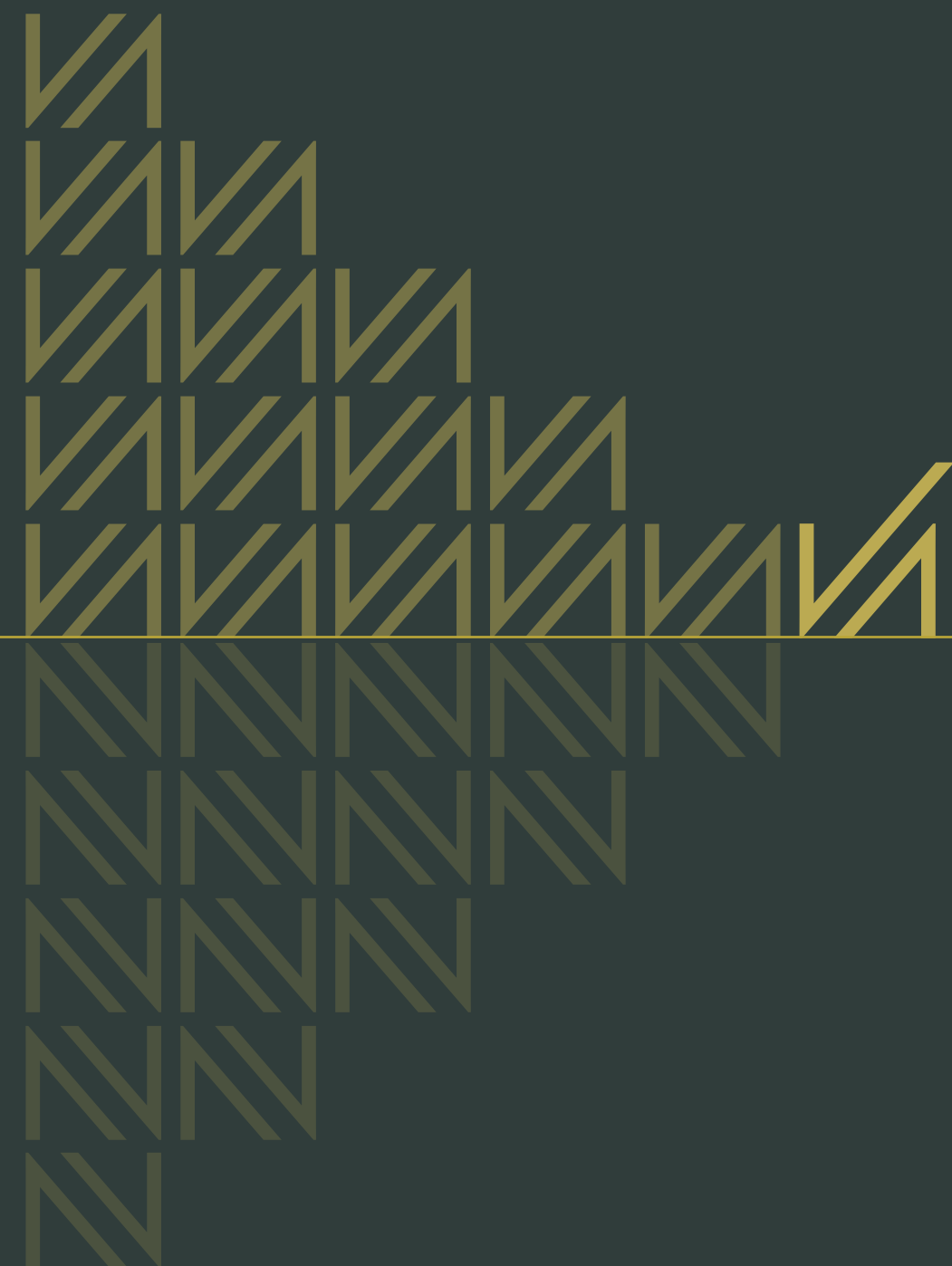
“A nation is not defined by its borders, but by the spirit of its people and their commitment to one another.”

03

PROJECT PROFILE

BUILDINGS
RESIDENTIAL
COMMERCIAL
DIVERSE PROJECT
INTERIOR DESIGN
STRUCTURAL DESIGN





COMMERCIAL PROJECT



SERVICED RESIDENTIAL BUILDING





HOTEL AND COMMERCIAL MALL Al-Narjis District

- Land Area: 13,802 square meters
- Number of Commercial Units: 26 units



“Building a nation requires vision, dedication, and the unwavering belief that together we can achieve greatness.”

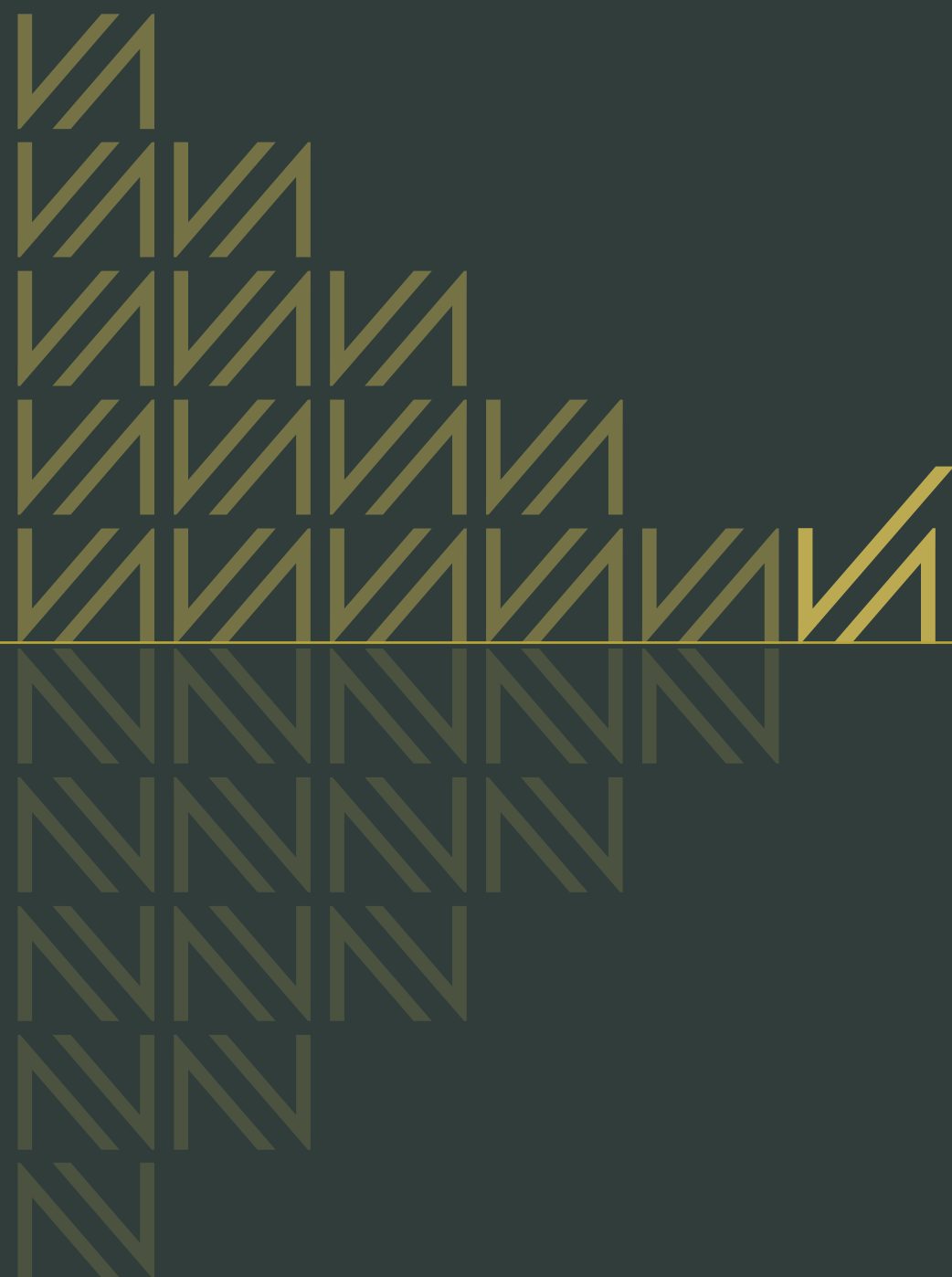


04

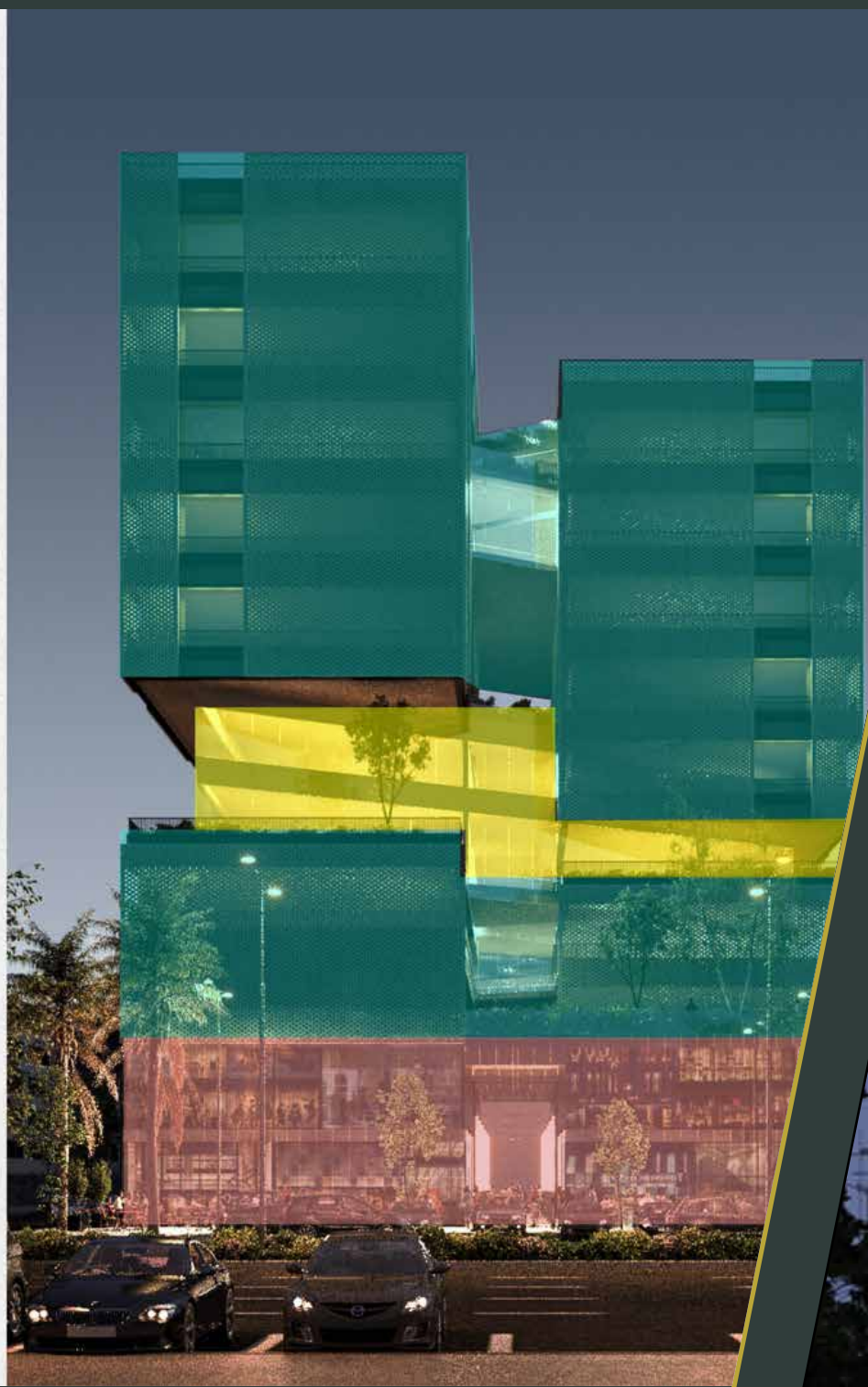
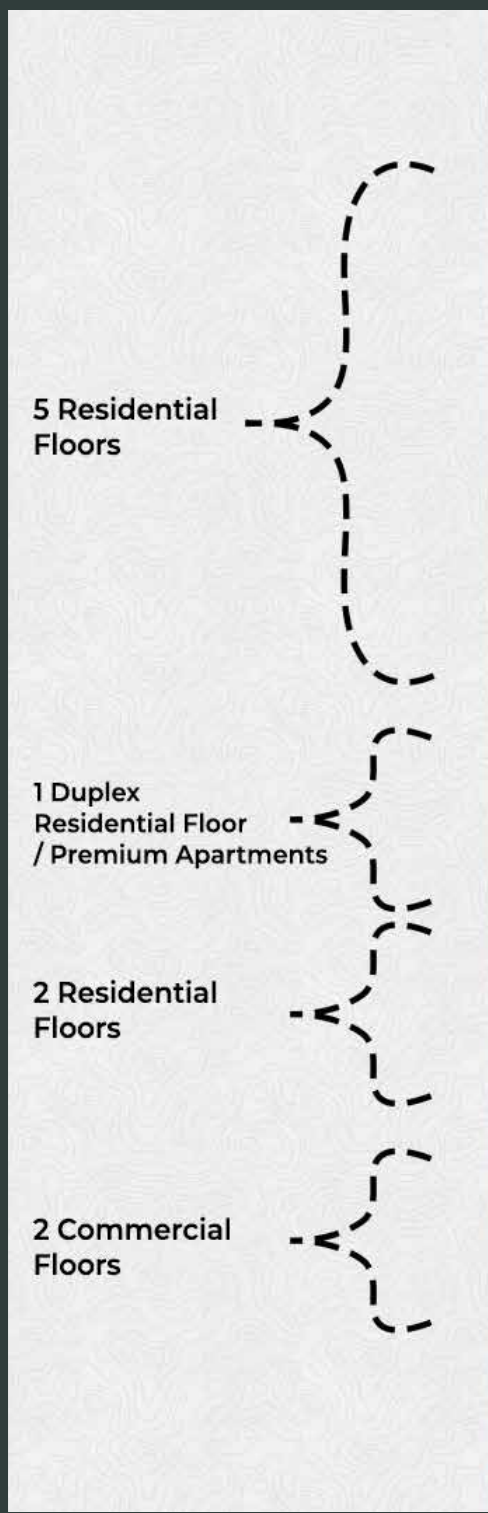
PROJECT PROFILE

BUILDINGS
RESIDENTIAL
COMMERCIAL
DIVERSE PROJECT
INTERIOR DESIGN
STRUCTURAL DESIGN





DIVERSE PROJECT

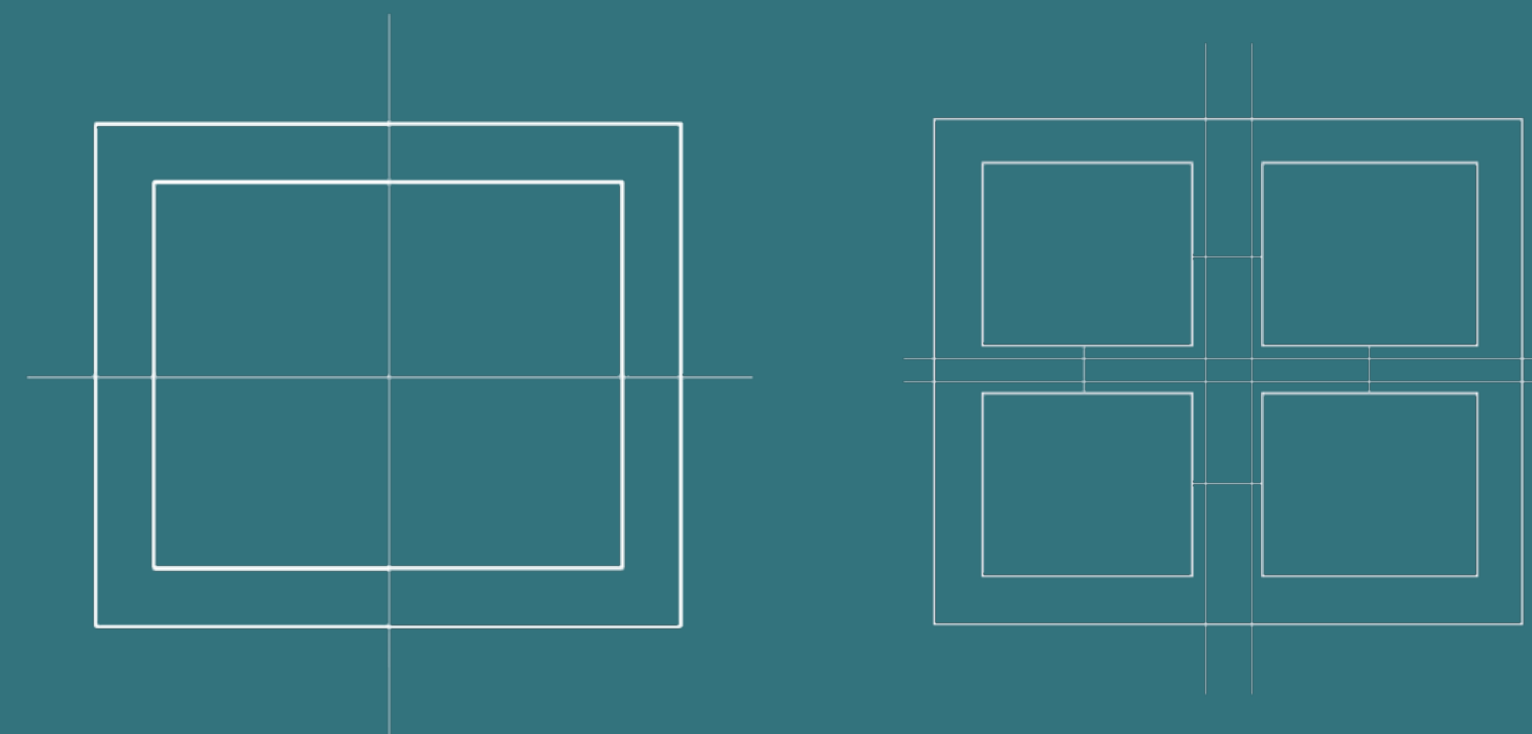


COMMERCIAL-RESIDENTIAL TOWER



RESIDENTIAL AND COMMERCIAL TOWER Alnamudhajiyyah District

- Land Area: 6268.64 square meters
- Number Units: 240 residential units + 4 commercial showrooms



Residential + Commercial

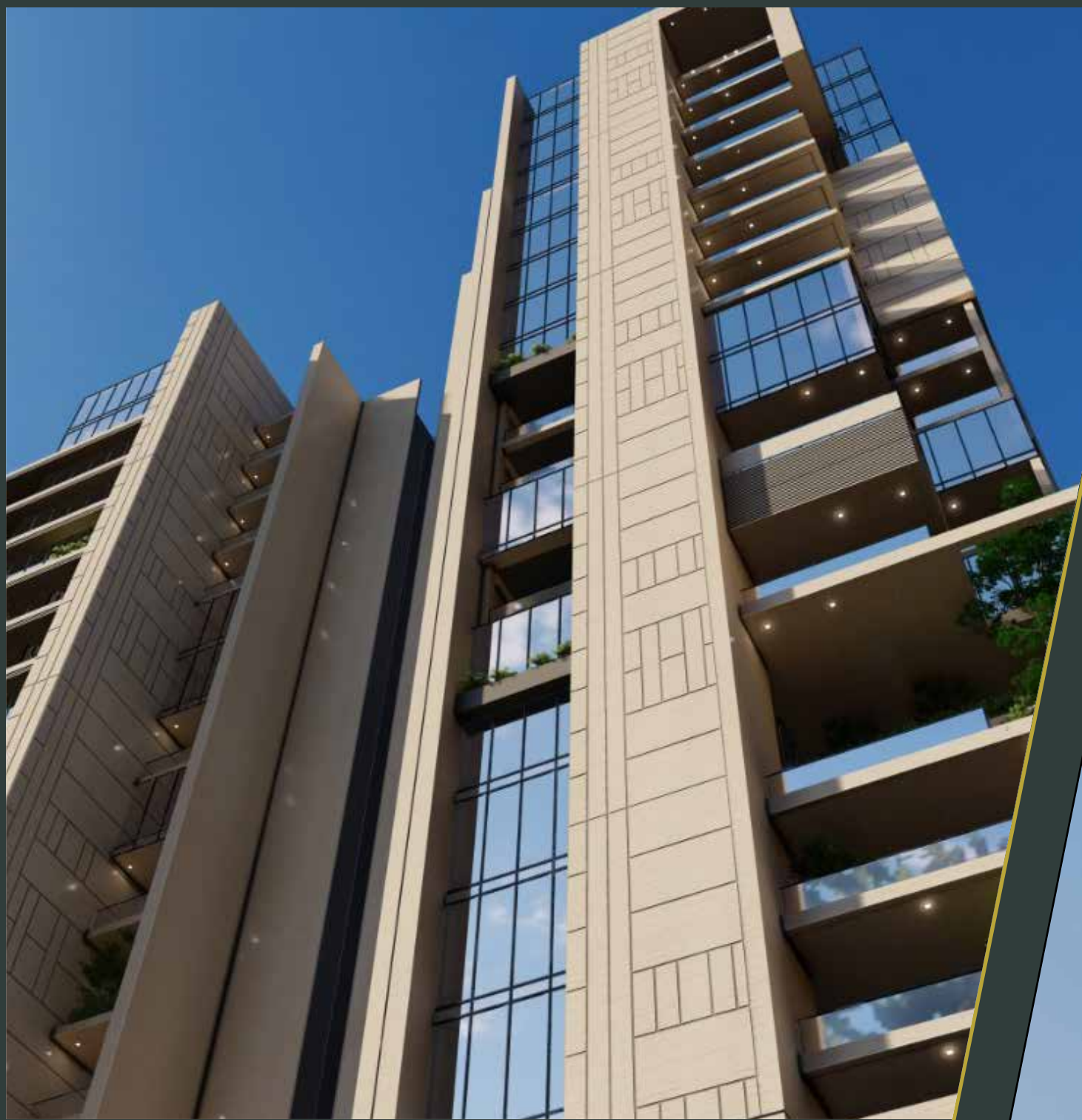


Residential



Commercial





RESIDENTIAL AND COMMERCIAL TOWER Alnamudhajiyyah District

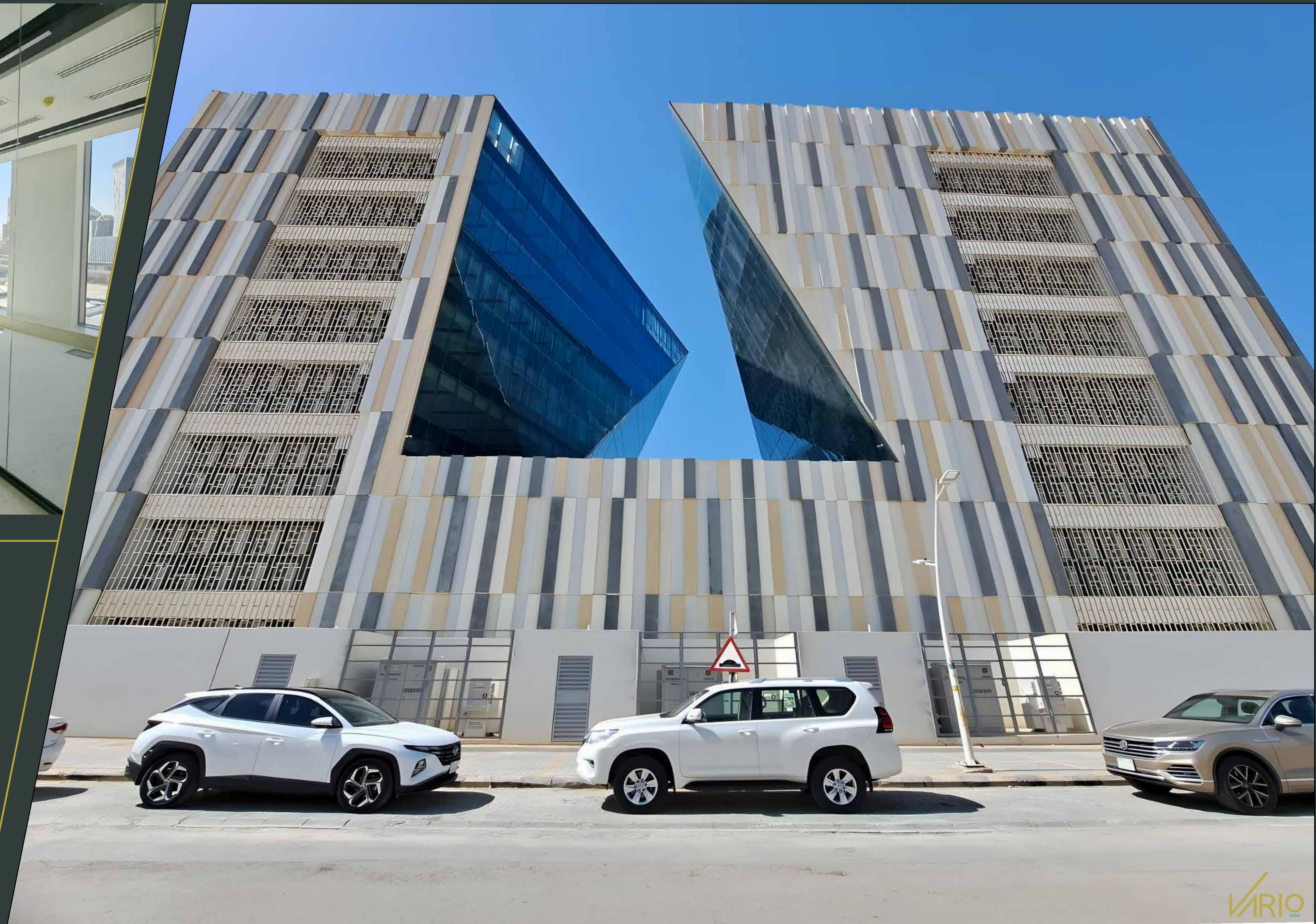
- Land Area: 6268.64 square meters
- Number Units: 240 residential units + 4 commercial showrooms





Al-Rasees Tower Al-Ghadeer District

- Land Area: 4,125 square meters
- Number of Floors: 8 floors





**OFFICES, SHOWROOMS,
AND RESTAURANTS**
Al-Nakhil District

- Land Area: 8,391 square meters





**RESTAURANT AND DRIVE-THRU,
WADI HANIFA CODE
Ergah District**

- Land Area: 2,280 square meters





AL-MAHALIB PARK GATE

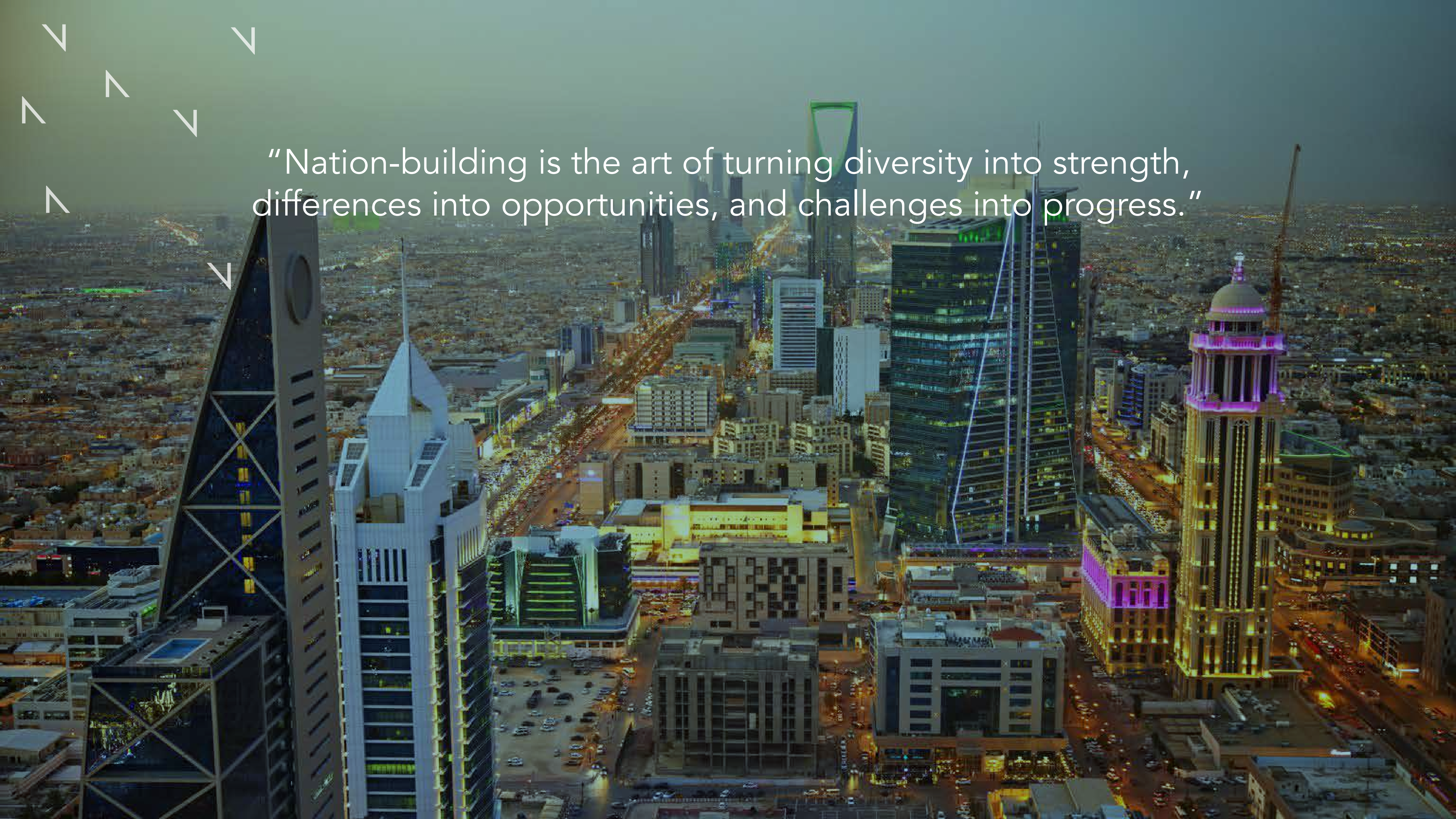




AL-MAHDIYAH MOSQUE Riyadh

- Land Area: 2,750 square meters



An aerial night view of a city skyline, featuring a prominent dark skyscraper with a triangular top on the left and a tall, illuminated tower with a purple top on the right. The city is densely packed with buildings, and the streets are lit up with yellow lights. The sky is dark, and the overall scene is a vibrant display of urban architecture at night.

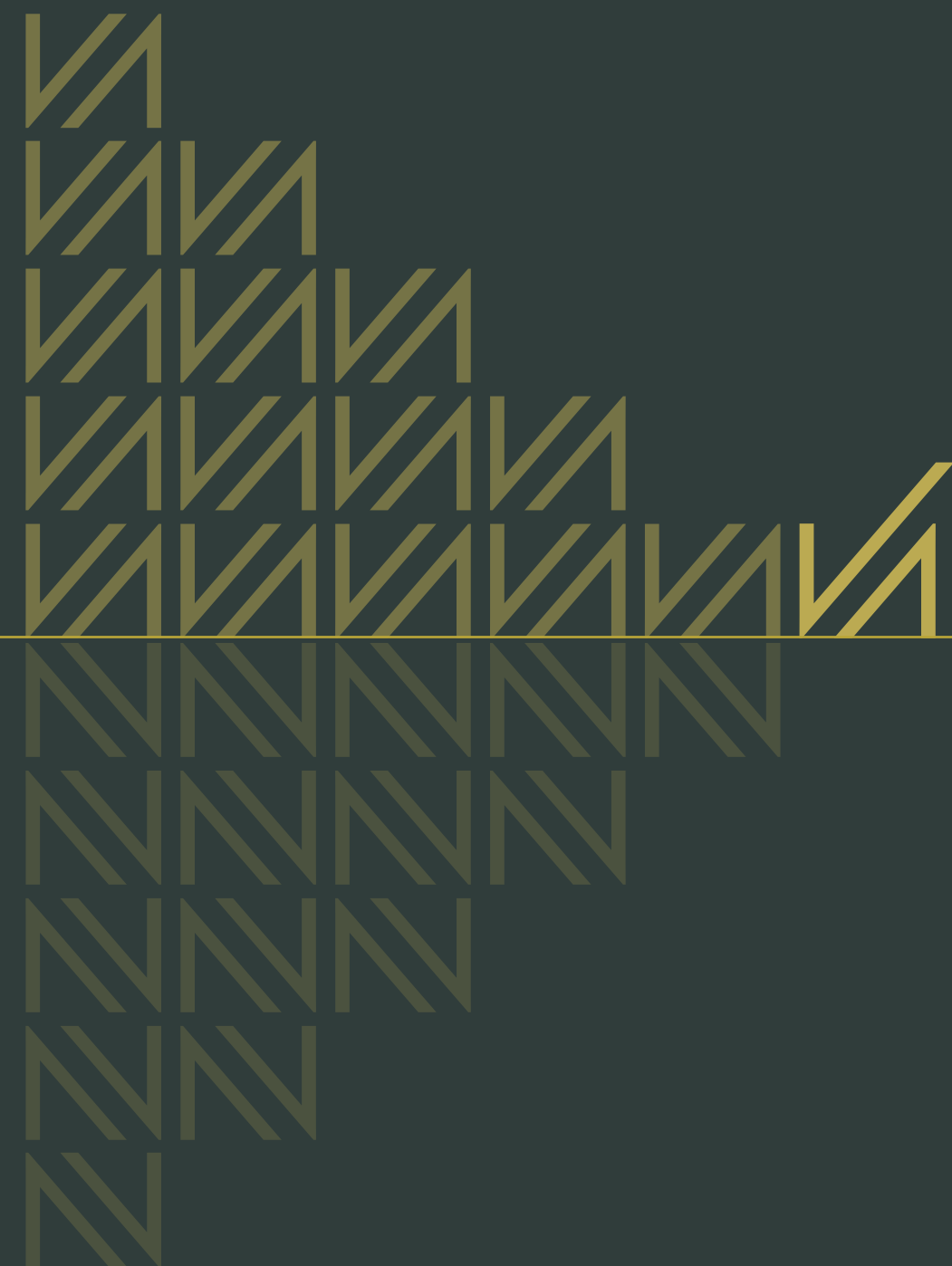
“Nation-building is the art of turning diversity into strength,
differences into opportunities, and challenges into progress.”

05

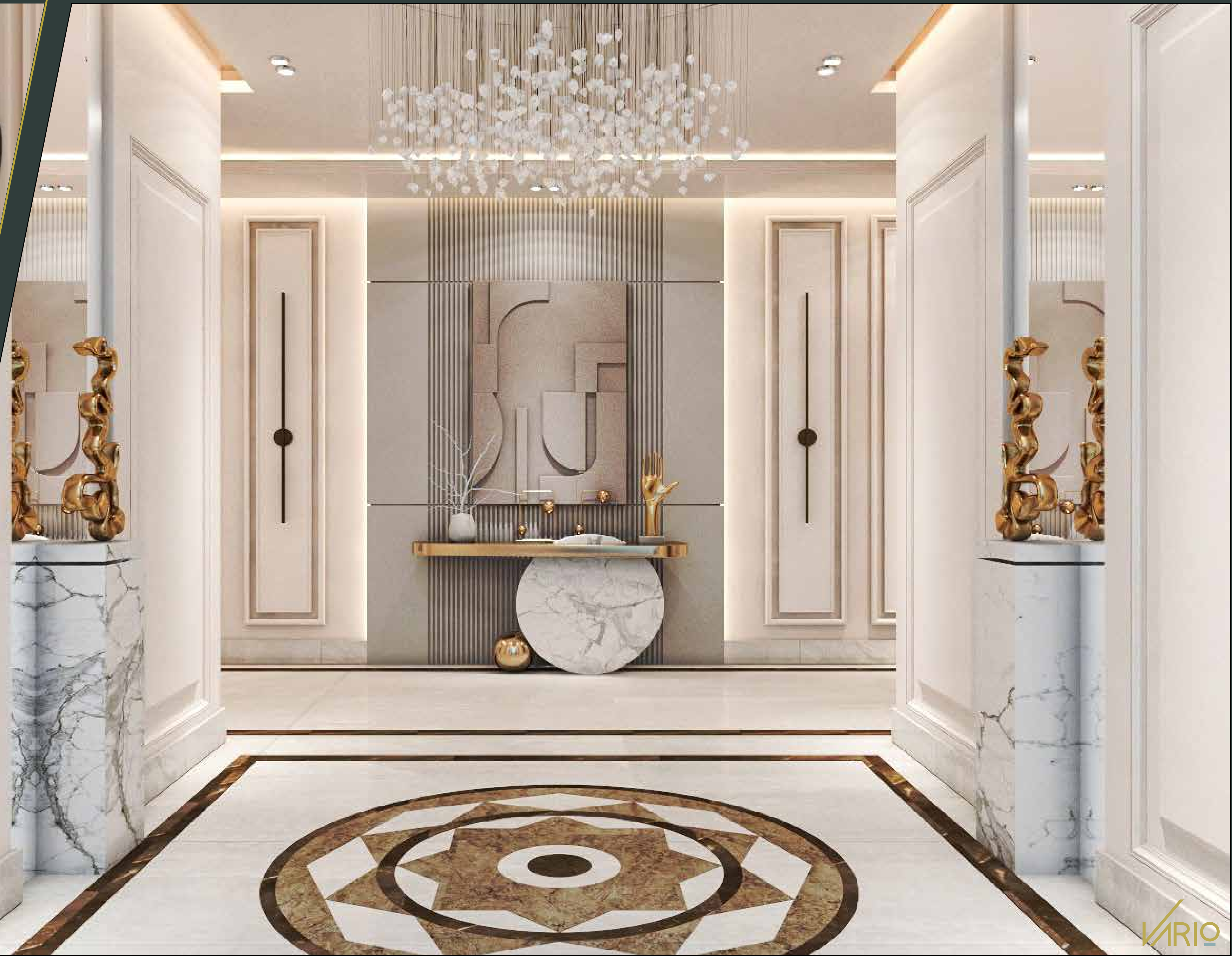
PROJECT PROFILE

BUILDINGS
RESIDENTIAL
COMMERCIAL
DIVERSE PROJECT
INTERIOR DESIGN
STRUCTURAL DESIGN



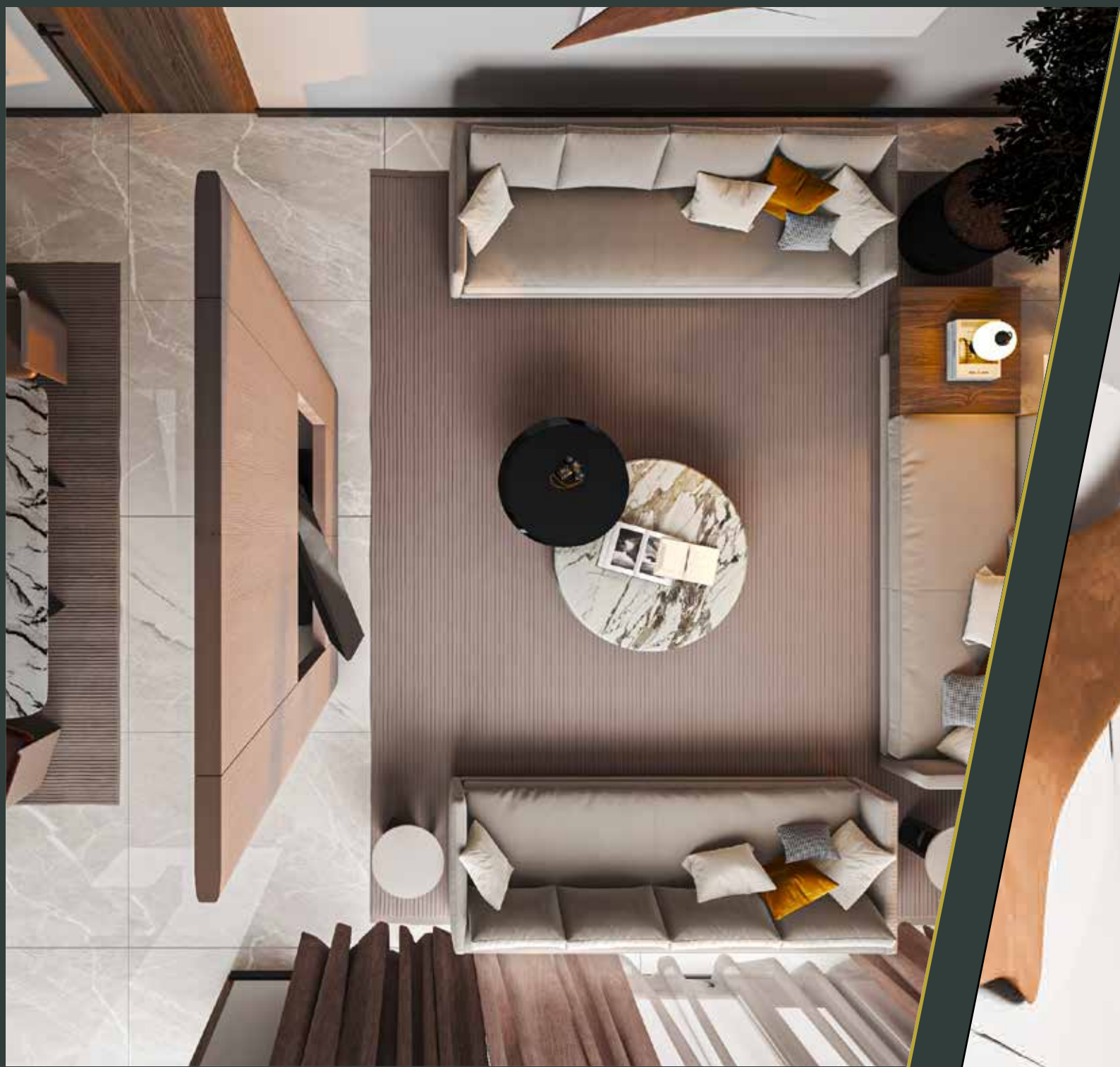


INTERIOR DESIGN



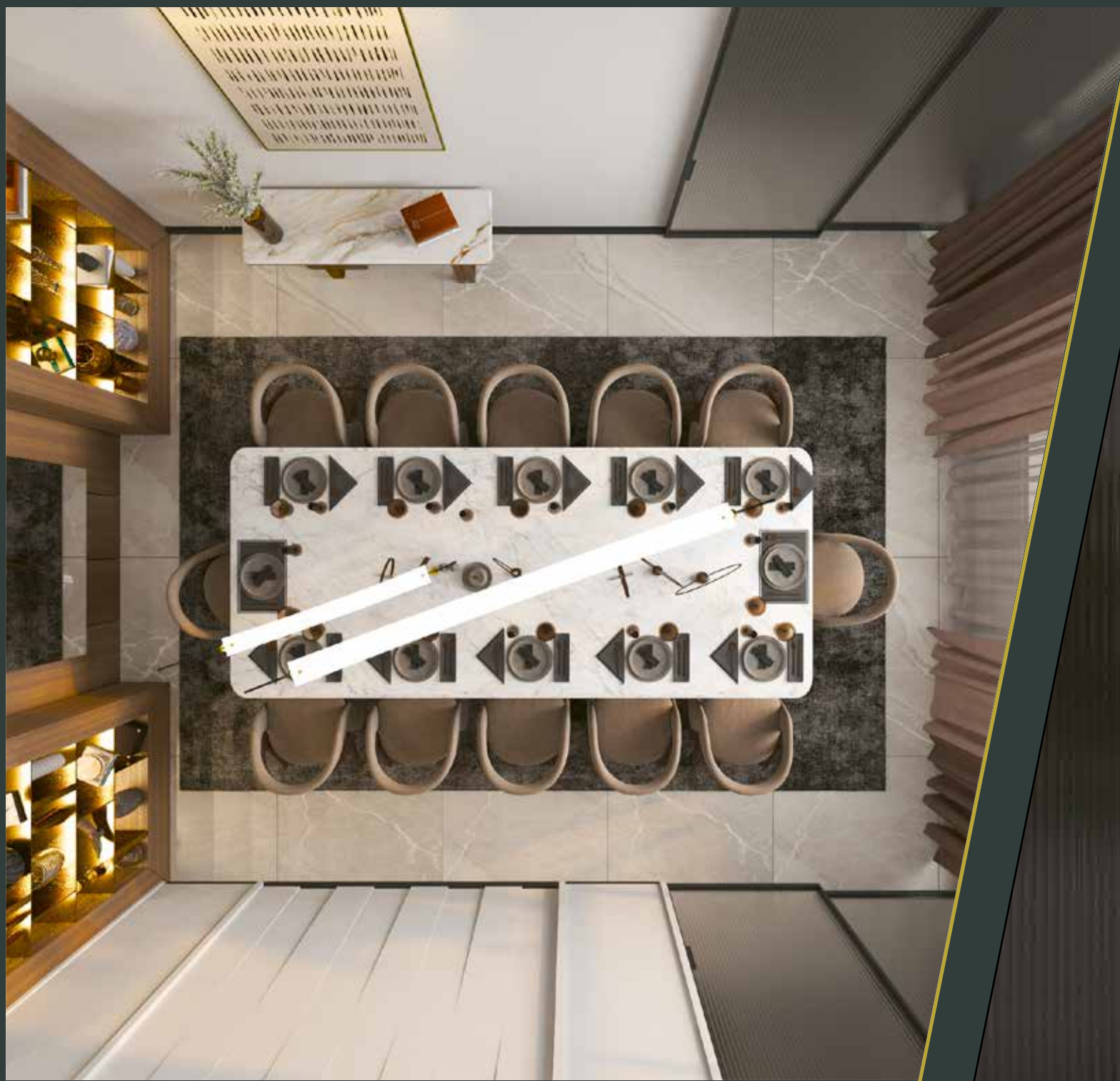
INTERIOR DESIGN
LOBBY





INTERIOR DESIGN
LIVING ROOM





INTERIOR DESIGN
DINING ROOM





INTERIOR DESIGN
DRESSING ROOM





INTERIOR DESIGN
MASTER BED ROOM



“The success of a nation lies not in how fast it grows, but in how deeply it nurtures its people and their potential.”

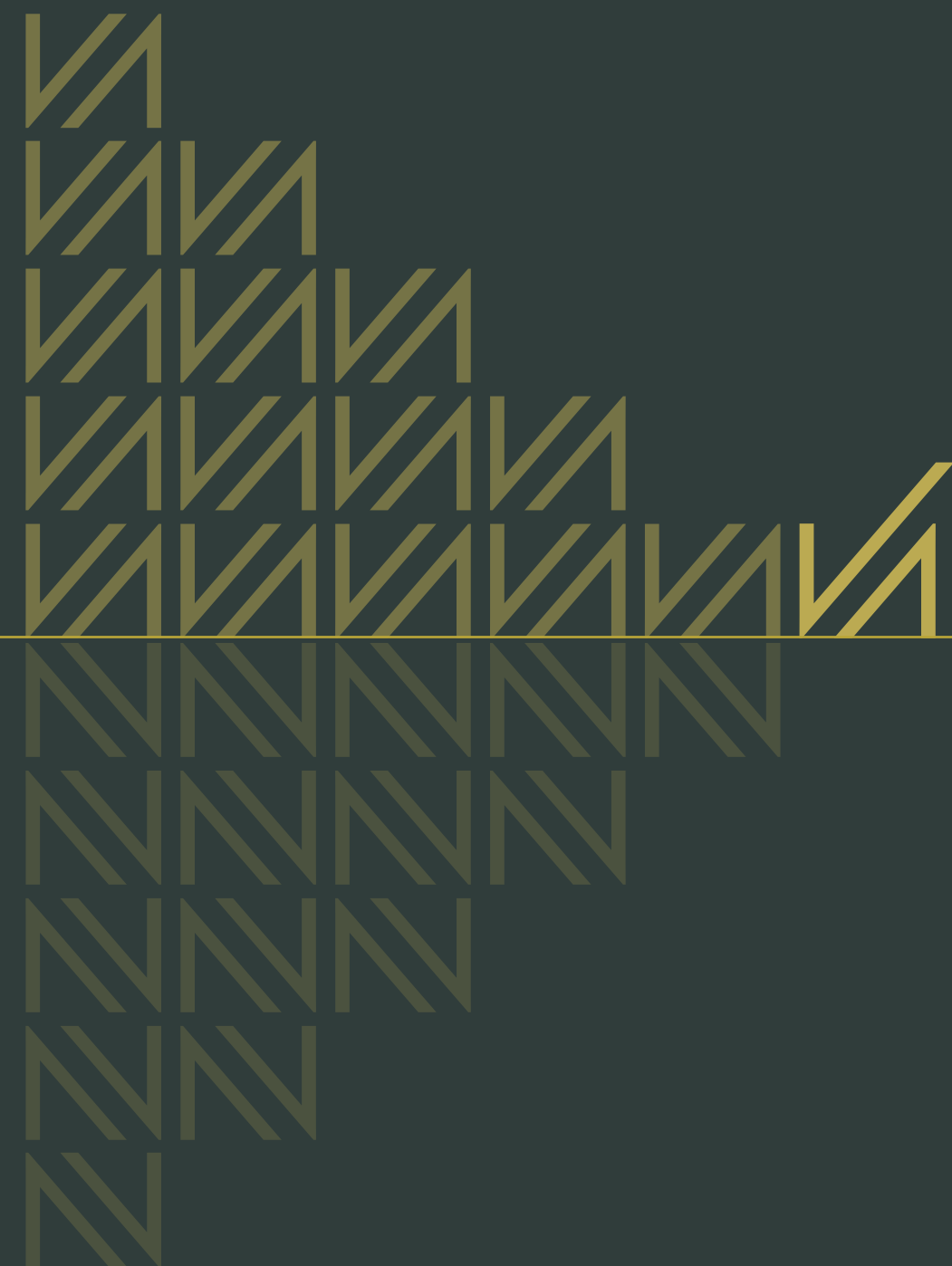


06

PROJECT PROFILE

BUILDINGS
RESIDENTIAL
COMMERCIAL
DIVERSE PROJECT
INTERIOR DESIGN
STRUCTURAL DESIGN





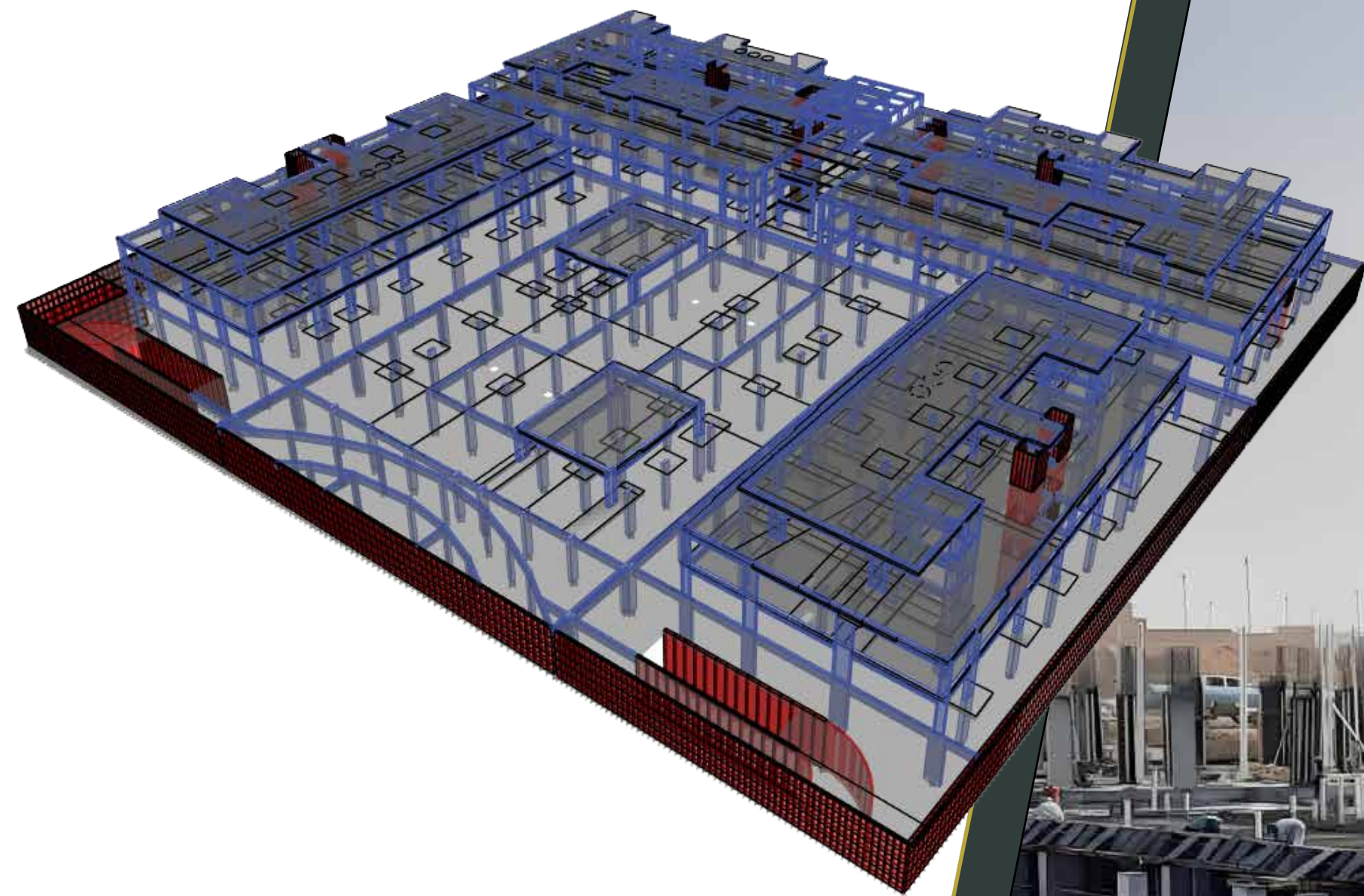
STRUCTURAL DESIGN

SUPERVISION AND STRUCTURAL DESIGN WORKS

- Inspection of Excavation and Levels
- Inspection of Foundation Works
- Inspection of Ground Beams
- Inspection of Concrete Columns
- Inspection of Roof Works
- Inspection of Masonry, Plastering, and Other Finishes
- Inspection of Electrical and Mechanical Works
- Preparation of a Timeline for All Project Phases
- Preparation of Technical Supervision Reports
- Preparation of Municipal Inspection Reports
- Completion Reports and Occupancy Certificates

STRUCTURAL DESIGN





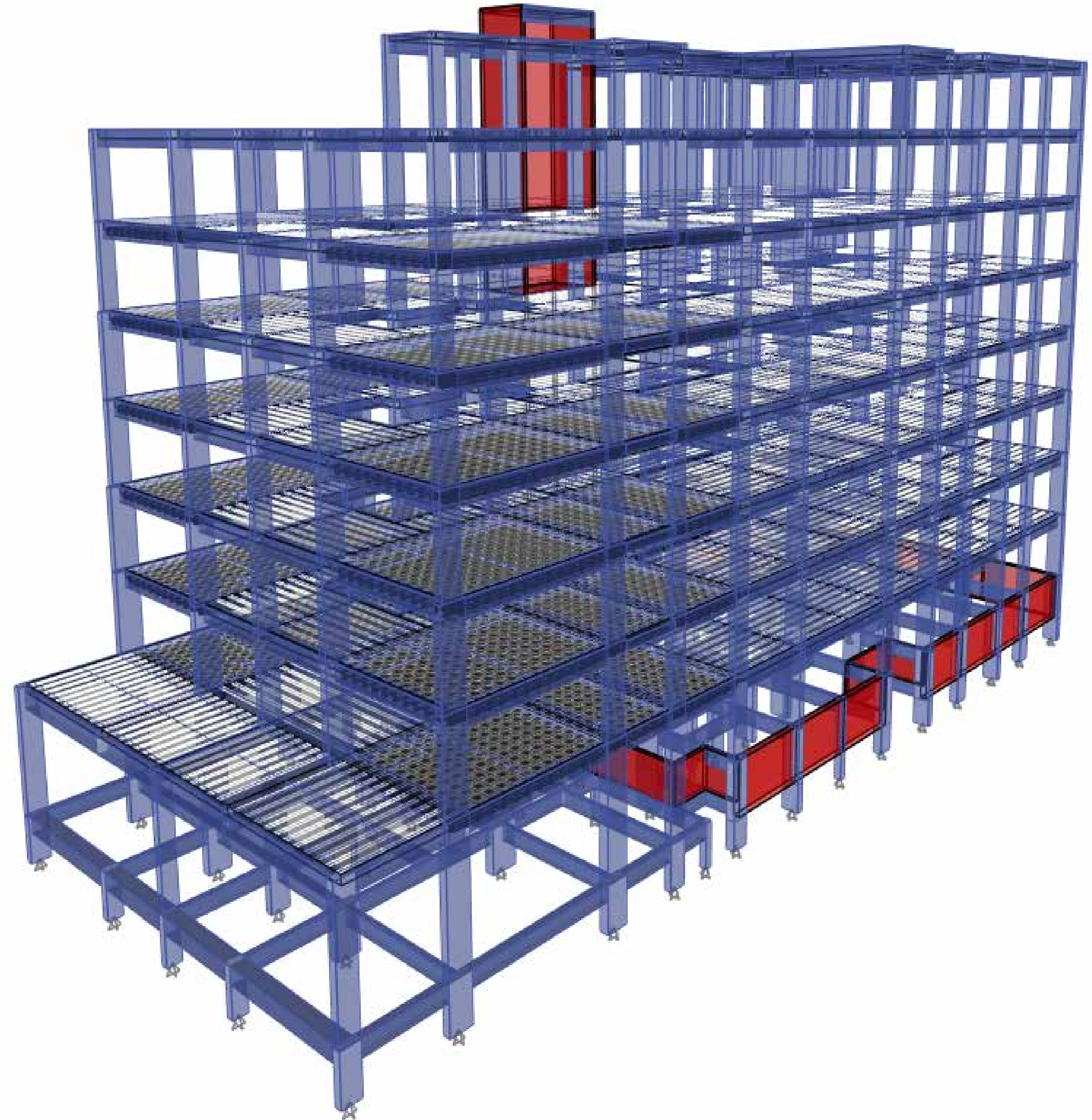
RESIDENTIAL-COMMERCIAL
Complex (Mall / Hotel / Offices)
Al-Narjis District

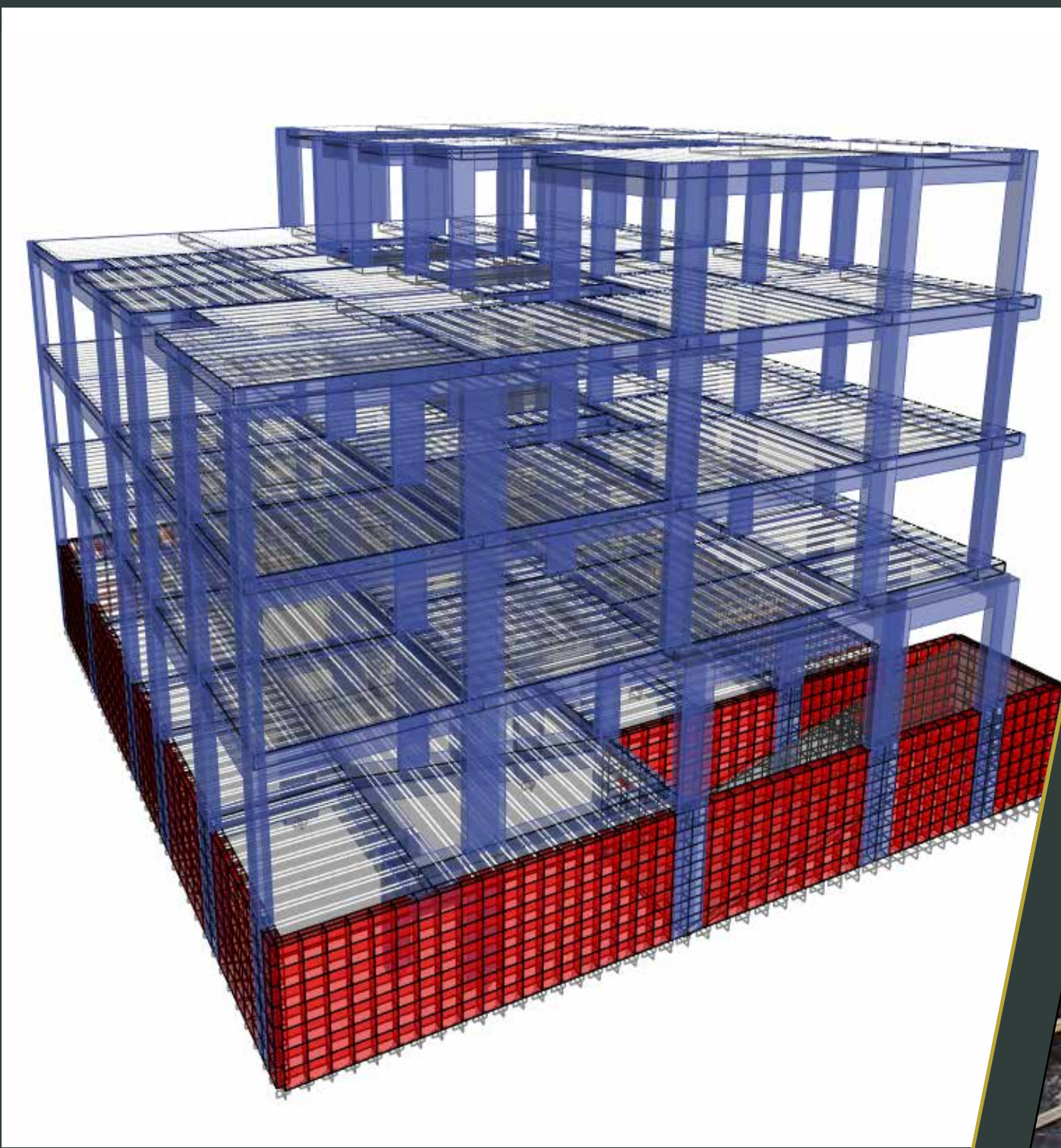
- 27 Residential Buildings on a 40,000 square meter area
- Basement + Ground Floor + First Floor + Second Floor
- + Upper Annexes



RESIDENTIAL-COMMERCIAL TOWER Al-Matar District – Riyadh

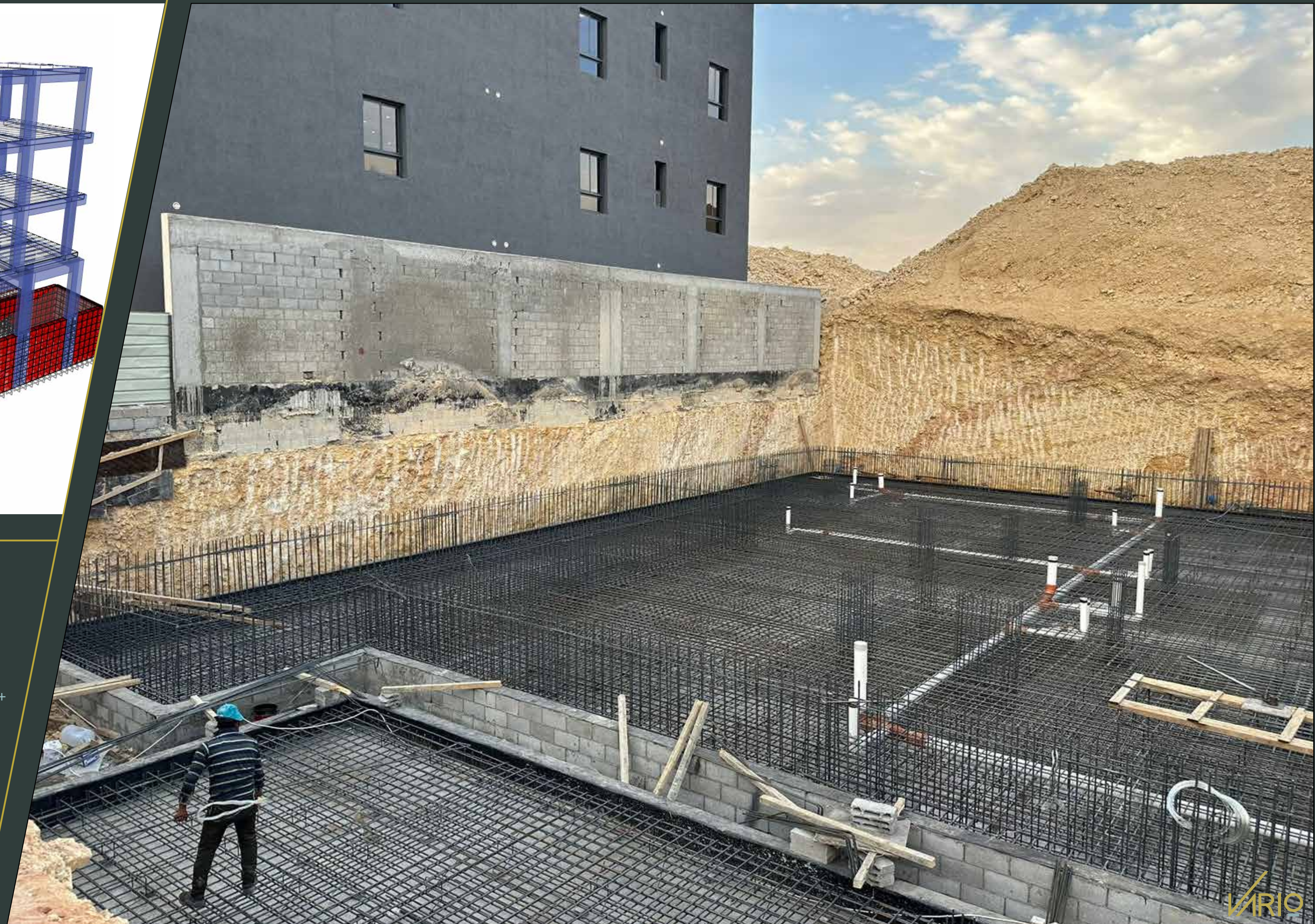
- Project Area: 90,000 square meters
- Part of the Murcia Project – Ministry of Housing
- Ground Floor + 8 Repeated Floors + Upper Annexes





RESIDENTIAL BUILDING Al-Narjis District – Riyadh

- Land Area: 1,000 square meters
- Consists of Basement + Ground Floor + First Floor + Second Floor + Upper Annexes





TWO RESIDENTIAL BUILDINGS Al-Qirawan District – Riyadh

- Land Area: 2,000 square meters
- Consists of Basement + Ground Floor + First Floor + Second Floor + Upper Annexes





READY TO BUILD SOMETHING BREATHTAKINGLY BRILLIANT?

Get in Touch Today to Get Started

Whether you're a government agency, a real estate developer, or an individual homeowner, VARIO is your partner in realizing your vision.

Contact us today to discuss your project and let's start building a better, more eye-catching, and sustainable future by our shared design.

GET IN TOUCH



CONTACT INFORMATION

920 014 465
055 000 0079

EMAIL

info@vario.sa

WEBSITE

www.vario.sa

ADDRESS

Al-Mohammadiyah District
Takhassusi Street
Riyadh, Postal Code: 12364

COMMERCIAL REGISTRATION

1010624555

